

McNeilus

VOLTERRA^{ZSL™}



RAISING THE BAR. LOWERING TCO.

Introducing the McNeilus[®] Volterra[™] ZSL[™] zero emission electric refuse collection vehicle.

CAB

Single Steer, Right or Left Handed Sit	One (1) Manual Adjust, Heated & Ventilated, Air-ride Seat w/ Arm Rests One (1) Tilt/Telescope Steering Column & Wheel Digital Widescreen Instrument Cluster Joystick & Controls Console RH/LH rigid mount seat
Cab Display	Integrated Wide-Screen Center Display
Side Window Operation	RH & LH Power windows
Tablet Mount	Tablet mounting plate/surface will be provided for a RAM style of mount
Accessory Power	5V USB-A Accessory Power Point On Dash 5v Dual USB-A/USB-C Power Point in Armrest
Windshield Wipers	Dual Radial Wipers, Steering column controlled
Sun Visor	Power Sunshade
Standards, Cab Design Designed to meet	MILSTD 1472 Ergonomic Standards NIOSH Truck Driver Anthropometric Dimensions SAE J2979 & J1814 Operator Controls London Transport Direct Vision SAE J2420 Cab Frontal Strength SAE J2422 Cab Roof Strength

CLEARSKY[™] TELEMATICS

ClearSky [™] Telematics	8-year subscription. Required for battery warranty
Over the Air Programming	Software revisions updated over air
Daily systems check	Battery state of charge, battery temperature, hydraulic fluid, power steering fluid, coolant, tire pressures. Displayed on center console screen and ClearSky [™] telematics
Fleet Configurable Truck Settings	Collection speed, lane departure system, maximum arm out speed, maximum reverse speed, maximum speed with rh stand operation, tailgate open speed warning, arm out speed warning, touch screen speed lock, arm working vehicle speed limit. Accessible through ClearSky [™] telematics
Condition Based Maintenance	Monitoring of brake pads, body hydraulic fluids, coolant Accessible through ClearSky [™] telematics
Fault Codes	Fault codes for axles, ADAS, battery system, body, brakes, hydraulics, lights, steering, thermal management systems Displayed on center console screen and ClearSky [™] telematics
Driver-park alert	Horn sound when door opens, and parking brake not set

ACTIVE SAFETY SYSTEMS

Blind Spot Detection	Radar Based w/ Pedestrian Detection
Blind Spot Indicators	On Instrument Cluster
Forward Collision Avoidance	Includes Active Braking
Lane Departure	Includes Follow Distance and Overspeed Alert
360° Camera System	Includes Alley Cam, Back Up Monitoring, and Rear Cross Traffic Alert
Driver Monitoring System	Lytix - Includes Texting, Overspeed, Unbelted, Follow Distance, and others; subscription service required (not included)
Electronic Stability Control	Roll Over Protection
Tire Pressure Monitoring	TPMS, all tire locations Displayed on center console screen and ClearSky [™] telematics

BATTERY SYSTEM

Low Voltage Batteries	Two (2) 12V Lead-Acid Batteries
Low-voltage Battery Disconnect	Battery Disconnect Switch at Battery Box
High-voltage Batteries	90% Charge in 4 hours-Level 2 Charging 150 kW
Charge Port	SAE J1772CCS1 200-amp Charge Port
Battery Isolation	Batteries Isolation from Chassis
High-voltage Battery MSD	HV Battery MSD located rear of cab, forward of body
Battery Warranty 3-string	8 years to retain 80% of original kWh capacity or 850 MWh of throughput

PAINT

Paint Complexity	Low Complexity
Paint (Optional)	2 Colors
Paint Markings (Optional)	Customer Decals

BODY SIZE & MATERIALS

Model/Capacity	27 yd with optional 31 yd
Body Floor	3/16" (0.1875 Inch) Heavy-Duty Floor
First Side Wall Panel	0.131 AR450 High-strength Steel
All Other Side Wall Panels	10 Gauge AR200 High-strength Steel
Body Roof	12 Gauge A5717/A1011 GR 50 Steel
Body Cleanout	Cleanout Door w/Spill Tray Both Sides
Body Lift	Two (2) Hydraulic Body Lift Cylinders Only

HOPPER MATERIALS

Hopper Floor	0.25 inch AR400 High-strength Steel
Hopper Inner Side Panels	10 Gauge A608 GR 50 Steel
Hopper Outer Side Panels	12 Gauge A607 GR 50 Steel, Radiused walls with no ribs
Hopper Door	34" H x 29 1/2" W with multi-point locking system

PACKER

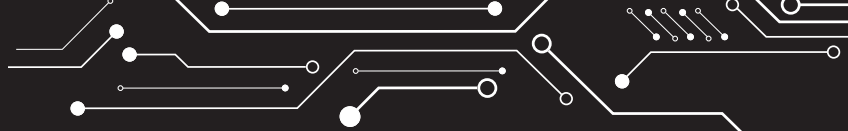
Packer Ejector Rail Plates	XWEAR chromium carbide
Packer Bottom Wear Shoes	XWEAR chromium carbide
Packer Side Wear Shoes	1/4" (0.25 inch) G50 Steel

ARM

Arm Model	6 foot reach with optional 12 foot reach
-----------	--

OPERATING PERFORMANCE

Vehicle Top Speed	65 MPH
Speed on Grade	27 MPH on 5% grade; 6 MPH on 20% grade
Acceleration	0-20 MPH in 8.1 sec
Turning Diameter - Wall to Wall	63' - 71'



The Volterra[™] ZSL[™] eRCV raises the bar for innovation and sustainability while improving total cost of ownership by up to an estimated 14%. And it's the only electric refuse collection vehicle that's certified zero emission by the United States Environmental Protection Agency (EPA) and California Air Resources Board (CARB).



AXLE, FRONT

Front Axle	20,000 lbs. GAWR
Front Suspension	4" Elliptical Taper Leaf
Front Shock Absorber	Front Shock Absorbers
Front Brakes	Air Disc Brakes – ZF Maxxus L2.0

AXLES, REAR

Rear Axles	2x 23,000 lbs. GAWR Tandem Set
Tandem Spacing	54 inches
Tandem Suspension	54 inches
Tandem Suspension	Air Disc Brakes – ZF Maxxus L2.0
Rear Axle Transmission	2-Speed Air Shift to Neutral w/Chassis Air or Service Air for Towing
Differential Lock (Optional)	Locking differential on each axle
Aux Tag Axle (Optional)	Watson SL1313, 500 lbs. Rated Steerable Axle wheels & tires

WHEELS & TIRES

Front Axle Tires std	315/80R22.5 Bridgestone M870; Qty 2
Front & Rear Wheels	Aluminum Clean Buff

eASL ROUTE AND PAYLOAD PERFORMANCE

Route Capability (level grade, 455SS rear tires, 25°F–85°F ambient, cab preconditioned via high-voltage battery charger connection, interior temperature-maintained w/doors & windows closed on route)	Distance: 80 miles Picks: 1000 picks Route Time: 10 hours Highway: 32 miles (1 hour) Route: 48 miles (9 hours) @< 80% depth of discharge of the battery
Legal Payload Capability (Assumes 2,000 lb. allowance for ZEV)	Required State Configurations: California 10 ton-23 ft bridge length, w/425 front, 455 rear tires & tag axle Oregon 10 ton-23 ft bridge length, w/425 front, 455 rear tires & tag axle Arizona 10 ton-23 ft bridge length, w/315 front, 455 rear tires & tag axle Colorado 11.5 ton-20 ft bridge length, w/315 front, 455 rear tires

LIGHTING

Cab Light Package	Standard LED Light Package
Body/Hopper Light Package	LED
Chassis Light Package	DOT Compliant LED
Tailgate Light Package	Light Bar
Work Light Package	LED

We offer a complete line of aftermarket parts and services to fit all makes and models. Contact your local sales representative or call 888.686.7278.



Learn more at McNeilusGarbageTrucks.com | StreetSmartParts.com

© 2024 McNeilus Truck and Manufacturing. McNeilus and the McNeilus logo, Street Smart Parts and the Steet Smart Parts logo are trademarks of McNeilus Truck and Manufacturing, Dodge Center, MN, USA. All other designated trademarks are the property of their respective owners. Specifications, descriptions and illustrations in this brochure are accurate as shown at the time of publication, but are subject to change without notice. Illustrations may include optional equipment and accessories and may not include all standard equipment.