



REFUSE PARTS & TOOLS CATALOG

"Nobody Works Harder For You Than Haaker"



We are committed to delivering the highest quality products and services through a team empowered to meet and exceed customer expectations.



ABOUT US

For over 50 years, HAAKER Equipment has been at the forefront of industrial cleaning equipment and service. As a top ranking producer, our objective is to provide our customers with quality products and complete support services for their many needs. We proudly provide municipal and industrial cleaning equipment, including refuse trucks, cart tippers, safety and PPE tools and accessories, street sweepers, and facility cleaning equipment. We support California and Arizona customers with local parts, an extensive rental fleet, in-shop and in-field service, and rugged equipment sales through trusted brands such as McNeilus, Micromatic Rotac, Seek Thermal, Elgin, Sonetics, Powerboss, Alkota, Stetco, Switch-N-Go, and more.

CONTENTS

MCNEILUS PARTS 04

Side Loaders.....	04
Front Loaders	12
Rear Loaders.....	16

EXCALIBRE CYLINDERS 20

HEIL PARTS 22

Side Loaders.....	22
Front Loaders	24
Rear Loaders.....	25

AMREP PARTS 26

Side Loaders.....	26
Front Loaders	26
Rear Loaders.....	26

NEW WAY PARTS 30

Side Loaders.....	30
Front Loaders	32
Rear Loaders.....	32

LABRIE PARTS 34

Side Loaders.....	34
Front Loaders	36
Rear Loaders.....	37

BUCKET TRUCKS - STETCO 38

FIRE DETECTION SENSORS 40



TIPPERS

42

WIRELESS HEADSETS - SONETICS

44

SAFETY & WORK LIGHTS - WHELEN

48

WORK LIGHTS - FEDERAL SIGNAL

56

SWEEPER PARTS

62

WORK TRUCKS - SWITCH-N-GO

64

SERVICE & TRAINING

66

Service 66

Training 69

RENTALS

70

Haaker Refuse Rentals 70

Haaker Total Clean Rentals 72

PRESSURE WASHERS

74

FLOOR SCRUBBERS & SWEEPERS

76

UTILITY VEHICLES

80

ELECTRIC EQUIPMENT

82





McNeilus side loaders deliver efficient, reliable refuse collection with a strong focus on safety and productivity. Designed for single-operator routes, they offer precise arm control, fast cycle times, and durable construction to handle demanding routes with minimal downtime.

Side Loader Tools and Accessories

Arms & Grabbers

MAST,ASSEMBLY



Part Number:

1474203

ARM, FRM MT,W/CYL



Part Number:

SWIVEL	1644783
FIXED	1644784

Call us today or visit us online to view our full line of products!

Rollers



Part Numbers:

ROLLER, GRABBER DOUBLE FINGER	643527
ROLLER, GRABBER SINGLE FINGER	643526

KIT,UPDATE,FNGR PVT PINS,ZR



Part Number:

1628780

GBR,STD FGR,ASSY,W/CYL



Part Number:

1457677

GBR,ARM,ASSY



Part Number:

1623649

GBR,STD FGR, PYTHON CONV



Part Number:

1371388

GRABBER,ZR,BOLT ON FINGER,ASSY



Part Number:

1623649

GRABBER GEAR,ZR96



Part Number:

1426894

STRAPS



643530	SGL FGR GRBR ARM	1108667	FGR SGL 500 LB WLDT
643535	DBL FINGER, TOP, GRBR ARM	1108668	FGR DBLR, 500 LB WLDT
		1108669	FGR DBLR, 500 LB WLDT

STOP,BUMPER,UPR ARM



Part Number:

1108008

ARM,GBR,LH,WLDT



Part Number:

1149353

ARM,GBR,300 GA



Part Numbers:

RH	1180227
LH	1180228

ARM,AUTO,AMSL,RH



Part Number:

1234603

FRM MT,10HL,OTR,ASSY,AR



Part Number:

1330873

GRABBER FINGERS



Part Numbers:

1235795	DBL GBR FGR, STD,WLDT
1235796	GBR,FGR,SGL,STD,WLDT
1235797	GBR,DOUBLE FINGER,STD MA,WLDT

HOOK,ARM STABILIZER,WLDT



Part Number:

1234688

E-CHAIN,ARM/BODY,ZRAD



Part Number:

1410359

FINGER,ZR96 GBR,BRG,SGL



Part Number:

1418568

FINGER,ZR96 GBR,BRG,DBL



Part Number:

1418569

KEEPER,GRABBER,FINGER



Part Number:

RH	1418647
----	---------

NUT,LOCK,ARM,SEC/GBR



Part Number:

1423394

BRKT,PROX,
GRABBER



Part Number:

1431700

RACE,INNER,
GRABBER



Part Number:

1432652

PLT,4 HOLE,
RTNR,GRBR



Part Number:

1456391

MOUNT,-
CYL,ARM



Part Number:

1457053

ARM,SECONDARY,AR,SSP



Part Number:

1397202

ASM,FNGR WLDT,ZR GRBR



Part Numbers:

SGL	1631830
DBL	1631832

Body Parts

FNDR SET,315,FRT,PLASTIC TUBE



Part Number:

1411695

CHANNEL,HYDZB, 10.00" LONG



Part Number:

1259861

SEAL,CLN
DOOR,21.50X18



Part Number:

1431700

RAIL,HYD MT
24.00



Part Number:

1173658

BASES



Part Numbers:

SPLINED GEAR HUB	1414549
BASE,SPLINE HUB	1414553

FENDER,LG BODY, WIDE



Part Numbers:

RH	1397933
LH	1397934

CLOSE-OUT,FENDER,BACK



Part Numbers:

RH PAC	1395133
LH PAC	1395134



MOUNT,FENDER,
FRONT,PLASTIC



Part Number:

1418882

Brackets

BRKT,R WHEEL F
MUDFLAP,BFI



Part Number:

613397

CLS, HPR WALL



Part Number:

1256402

PLT,CVR,SLIDE,ZR,G1A



Part Number:

1469919

END, E-CHAIN



Part Numbers:

FEMALE	1467035
MALE	1467036

BRKT,UPR SPRT,RH



Part Number:

1106804

LIGHT,CANOPY,
SIDE,ASSY



Part Number:

1566789

E-CHAIN, ARM



Part Number:

1410553

BRKT,PROP ROD
HDR,TG



Part Number:

1240411

Bumpers

BUMPER,RBR 3.50X6.00



Part Number:

1130076

BUMPER,RUBBER ARM



Part Number:

1466127

BUMPER, MOUNT



Part Numbers:

RH	1341510
LH	1341508

Cylinders and Accessories

CYL,3.5X17.88X2,DUMP



Part Number:

1418164

CYL,HYD,22X4.5X48.75



Part Number:

1536126

CYL,HYD 4.50X52.75 PVT



Part Number:

1526762

CYL,1.50 X 66 X 1.125,REACH,ZR



Part Number:

1472986

CYL,2X1X6.25,GBR,5/8CUSH



Part Number:

1459012

CYL,3.5X14.75X2,RCH,TRIP CUSH



Part Number:

1412179

CYL,AIR,THROTTLE,1" PULL



Part Number:

601469

PIN.ZR GRABBER CYL,ROD



Part Number:

1612905

CYL,EJR,ZR



Part Numbers:

LONG	1572635
MEDIUM	1572634
SHORT	1572633

CYL,2.00X1.25X67.00,REACH MA



Part Number:

1145650

Wearables

LINK,LIFTER,ASSY



Part Numbers:

RH	1327528
LH	1235013

FILTER-PKR RTN



Part Number:

604429

PSHAFT,1350,SPLT LCK,2.5X34.14



Part Number:

1488021

SHOE,EJECTOR,ZR



Part Number:

1500481

Plates

PLATE,CVR,GRABBER



Part Number:

1414584

PLATE,DBL FGR MOUNT



Part Number:

1415070

PLATE,BELT RTNR



Part Numbers:

DBL	1415074
SGL	1415073

Weldments

WASHBOARD,SOLID 3/4 SPDL



Part Number:

1515435

SHOE,PKR,X-WEAR,RH,WLDT



Part Number:

1323080

Motors and Gearboxes

MOTOR,9.74 CI,1" SAE
6B,BR,RR



Part Number:

1662566

MOTOR,8.8 CIR,1.0 SAE
6B,THRU



Part Number:

1641711

MOTOR,9.74 CI,1" SAE
6B,RR



Part Number:

1662565

DISC BRAKE,MOTOR,
ZR GBR,G109



Part Number:

1641713

GEAR,DRIVE



Part Number:

1414556

KIT,STUD,ZR MOTOR



Part Number:

1666895

Find Vehicle-Specific Parts With Your Truck VIN

Find the right truck parts fast using the online interactive parts catalogue. Enter your VIN or truck model to see accurate, vehicle-specific components and get the correct parts the first time.



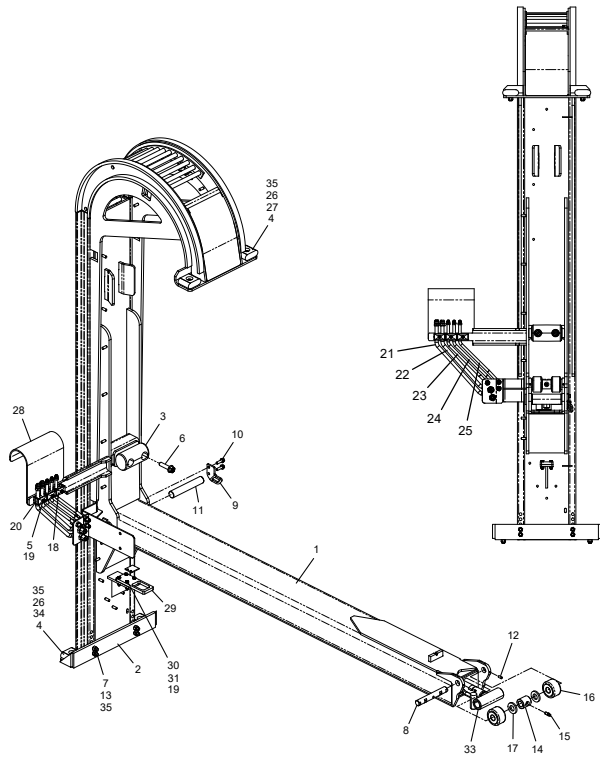
Interactive
Parts Catalogue



ZERO RADIUS[®] (ZR) MAST ASSEMBLY PARTS | 201

A. STANDARD 6FT MAST ASSEMBLY

Item #	MTM Part #	Description	Qty
	1540455	MAST,ASSY,ZR	1
1	1538795	MAST,WLDT,ZR	1
2	1414344	STOP,BOTTOM,WLDT	1
3	1466127	BUMPER,RUBBER ARM	1
4	1525482	BUMPER,MAST	4
5	1134450	SCR,CAP,HEX .31-18X2.25 G8 ZY	3
6	1243783	SCR,FLG,HEX .62-11X2.50 G8 ZY	2
7	1136748	SCR,CAP,HEX .50-13X2.00 G8 ZY	4
8	1415012	PIN,ROLLER,INNER BOOM	1
9	1515388	HOOK,RETAINER PIN,MAST,ZR	1
10	1243637	SCR,FLG,HEX .38-16X1.25 G8 ZY	2
11	1466236	PIN,ARM	1
12	1371186	SCR,SET,SOC,CP .31-18X.75 BO	2
13	1579510	NUT,HEX,KLDT .50-13 G9 EG	4
14	1414339	SPACER,SLIDE,CENTER	1
15	1433603	FTG,ST,GREASE .12NPT X 1.25 ST	1
16	1414338	ROLLER,CAM,3" W/SEALS	2
17	1414414	SPACER,ROLLER	2
18	0101517	CLAMP,TUBE,1/2 TWIN WLD,STAUFF	2
19	0120176	NUT,HEX,KLDT .31-18 GC ZC	7
20	0101523	CLAMP,5/8" DBL RAIL,STAUFF	1
21	1467615	TUBE,HYD 10 MAST,ARM UP,ZR	1
22	1467616	TUBE,HYD 10 MAST,ARM DOWN,ZR	1
23	1467617	TUBE,HYD 08 MAST,GBR OPEN,ZR	1
24	1467618	TUBE,HYD 08 MAST,GBR CLOSE,ZR	1
25	1467620	TUBE,HYD 08 MAST,ARM DRAIN,ZR	1
26	0005340	NUT,HEX,KLDT .50-13 GC ZC	4
27	1136745	SCR,CAP,HEX .50-13X1.50 G8 ZY	2
28	1455425	BRKT,HOSE GUIDE,ARM,ZR	1
29	1458714	PLATE,HOOK EYE	1
30	1134408	SCR,CAP,HEX .31-18X1.50 G5 ZC	4
31	0120276	WASH,FLT .31X.69X.06 ZY HDN	4
33	1472986	CYL,1.50 X .66 X 1.125,REACH,ZR	1
34	1136746	SCR,CAP,HEX .50-13X1.75 G8 ZY	2
35	0120279	WASH,FLT .50X1.06X.12 ZY HDN	8

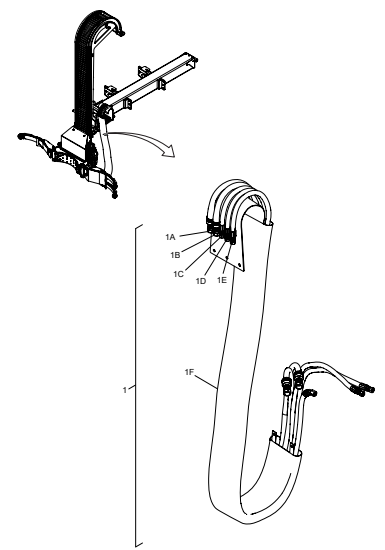


B. STANDARD 6FT/EXTENDED 12FT REACH HOSE ASSEMBLY

Item #	MTM Part #	Description	Qty
1	1541560	HOSE ASSY,W SLEEVE,ZR	1
1A	1507425	HOSE ASSY 08CR 102.75 A10F10F08	1
1B	1507426	HOSE ASSY 08 CR 101 A10F10F08	1
1C	1507427	HOSE ASSY 06 CR 110.5 AFFB1	1
1D	1507428	HOSE ASSY 06 CR 109 AFFB1	1
1E	1507429	HOSE ASSY 06 CR 95 AFFB1	1
1F	1541562	SLEEVE,HOSE ASSY	1

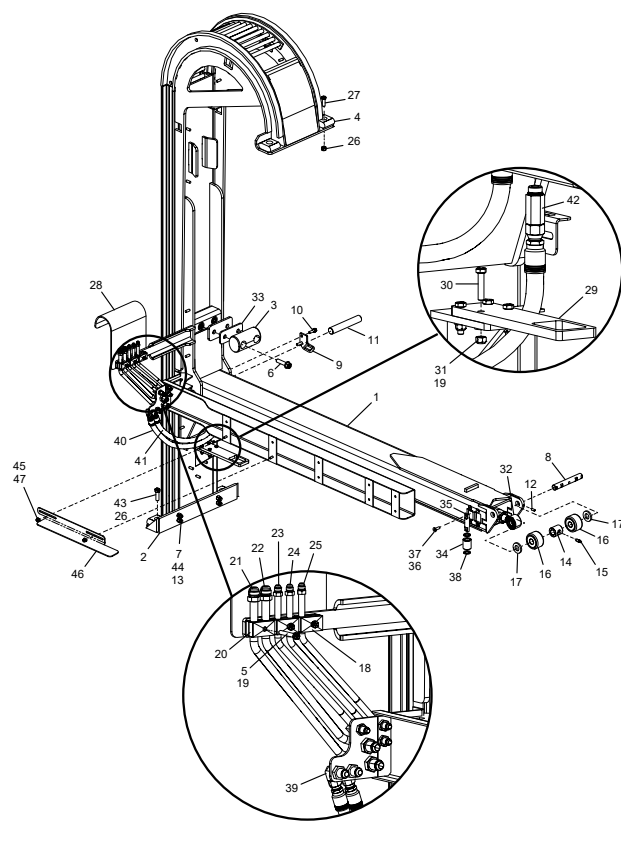
ASSEMBLY BREAKDOWN NOTES:

* Item 1 includes items 1A - 1F.



E. EXTENDED 12FT REACH MAST ASSEMBLY

Item #	MTM Part #	Description	Qty
	1540454	MAST ASSY,ZR,EXT REACH	1
1*	1538797	MAST,WLDT,ZR EXT REACH*PART OF	1
2	1414344	STOP,BOTTOM,WLDT	1
3	1466127	BUMPER,RUBBER ARM	1
4	1525482	BUMPER,MAST	4
5	1134450	SCR,CAP,HEX .31-18X2.25 G8 ZY	3
6	1243783	SCR,FLG,HEX .62-11X2.50 G8 ZY	2
7	1136748	SCR,CAP,HEX .50-13X2.00 G8 ZY	4
8	1415012	PIN,ROLLER,INNER BOOM	1
9	1515388	HOOK,RETAINER PIN,MAST,ZR	1
10	1243637	SCR,FLG,HEX .38-16X1.25 G8 ZY	2
11	1466236	PIN,ARM	1
12	1371186	SCR,SET,SOC,CP .31-18X.75 BO	2
13	1245252	NUT,HEX,KLDT .50-13 G9 ZY	4
14	1414339	SPACER,SLIDE,CENTER	1
15	1433603	FTG,ST,GREASE .12NPT X 1.25 ST	1
16	1414338	ROLLER,CAM,3" W/SEALS	2
17	1414414	SPACER,ROLLER	2
18	0101517	CLAMP,TUBE,1/2 TWIN WLD,STAUFF	2
19	0120176	NUT,HEX,KLDT .31-18 GC ZC	7
20	0101523	CLAMP,5/8" DBL RAIL,STAUFF	1
21	1467615	TUBE,HYD 10 MAST,ARM UP,ZR	1
22	1467616	TUBE,HYD 10 MAST,ARM DOWN,ZR	1
23	1467617	TUBE,HYD 08 MAST,GBR OPEN,ZR	1
24	1467618	TUBE,HYD 08 MAST,GBR CLOSE,ZR	1
25	1467620	TUBE,HYD 08 MAST,ARM DRAIN,ZR	1
26	0005340	NUT,HEX,KLDT .50-13 GC ZC	4
27	1136745	SCR,CAP,HEX .50-13X1.50 G8 ZY	2
28	1455425	BRKT,HOSE GUIDE,ARM,ZR	1
29	1467791	PLATE,HOOK EYE,ZR	1
30	1134408	SCR,CAP,HEX .31-18X1.50 G5 ZC	4
31	0120276	WASH,FLT .31X.69X.06 ZY HDN	4
32	1489096	CYL,SPL,1.75X.56,75X1.25,EXT R	1
33	1473787	PLATE,SPACER	1
34	1485548	ROLLER,END	4
35	1485551	PIN,SUPPORT,MAST	4
36	0623858	SCR,FLT,SOC .38-16X1.25 835 BO	8
37	0120177	NUT,HEX,KLDT .38-16 GC ZC	8
38	1485549	WASHER,ROLLER,END	8
39	1260502	FTG,90 BJC-SLIC MM ST BH	2
40	1474747	HOSE ASSY 08 CR 25 BFF08	1
41	1474748	HOSE ASSY 08 CR 22 BFF08	1
42	1144773	ADPT,STRG,O-RING-JC,LNG#8	2
43	1136746	SCR,CAP,HEX .50-13X1.75 G8 ZY	2
44	0120279	WASH,FLT .50X1.06X.12 ZY HDN	4
45	1244557	SCR,BTN,SOC .31-18X.75 835 BO	2
46	1643476	PROX TARGET,ARM,ZR,12'E-CHAIN	1
47	0120199	NUT,FLG,KLDT .31-18 GC CW	2



ASSEMBLY BREAKDOWN NOTES:

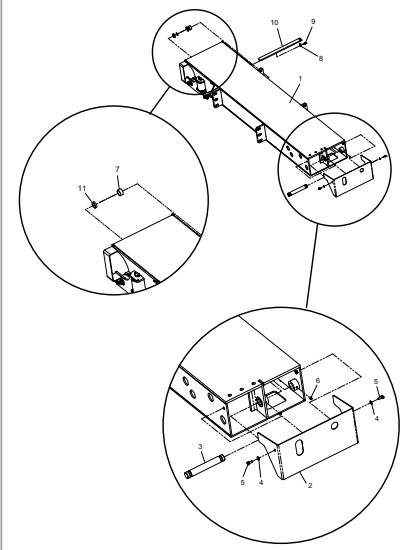
* To order Item 1, please order the Outer Tube Assembly PN 1540454.
 * See section B for the Hose Assembly Breakdown.

F. EXTENDED 12FT REACH OUTER SLIDE TUBE ASSEMBLY

Item #	MTM Part #	Description	Qty
	1667451	OUTER MT TUBE WLDT/ASSY,ZR EXT	1
1*	1485514	OTR MT,ZR EXT,T FLR,ASSY,MYK3	1
2	1469921	COVER,BACK,ZR,G1A	1
3	1469924	PIN,CYLINDER,CLDR SIDE,OUTER	1
4	0120276	WASH,FLT .31X.69X.06 ZY HDN	2
5	1134430	SCR,CAP,HEX .31-18X.75 G8 ZY	2
6	0005460	SCR,SET,SOC,CP .38-16X.50 BO	2
7	1489112	SPACER,CYL,2	1
8	1473052	TAB,ARM STOP	1
9	1241613	SCR,FLG,HEX .31-18X.75 G5 ZY	1
10	1473051	STRAP,ARM STOP,OUTER BOOM	1
11	1489113	SPACER,CYL,3	1

ASSEMBLY BREAKDOWN NOTES:

* To order Item 1, please order the Outer Tube Assembly PN 1667451.

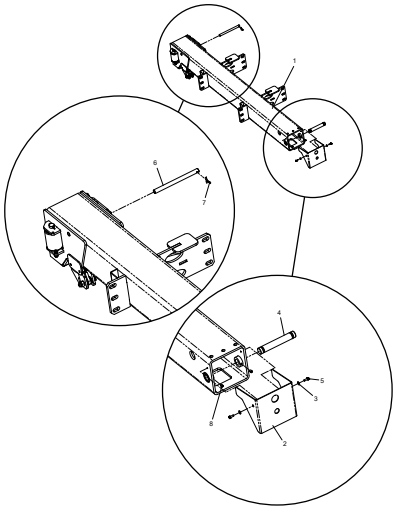


G. EXTENDED 12FT REACH OUTER SLIDE TUBE ASSEMBLY

Item #	MTM Part #	Description	Qty
	1667451	OUTER MT TUBE WLDT/ASSY,ZR EXT	1
1*	1485514	OTR MT,ZR EXT,T FLR,ASSY,MYK3	1
2	1469921	COVER,BACK,ZR,G1A	1
3	1469924	PIN,CYLINDER,CLDR SIDE,OUTER	1
4	0120276	WASH,FLT .31X.69X.06 ZY HDN	2
5	1134430	SCR,CAP,HEX .31-18X.75 G8 ZY	2
6	0005460	SCR,SET,SOC,CP .38-16X.50 BO	2
7	1489112	SPACER,CYL,2	1
8	1473052	TAB,ARM STOP	1
9	1241613	SCR,FLG,HEX .31-18X.75 G5 ZY	1
10	1473051	STRAP,ARM STOP,OUTER BOOM	1
11	1489113	SPACER,CYL,3	1

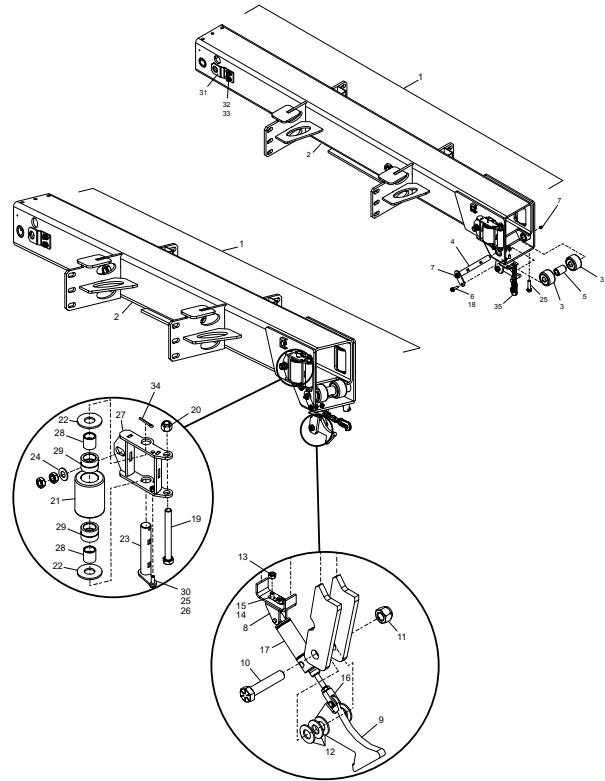
C. STANDARD 6FT REACH OUTER SLIDE TUBE ASSEMBLY

Item #	MTM Part #	Description	Qty
	1668041	TUBE,ARM,ZRR6,FLR	1
1	1506686	TUBE,SLIDE,OUTR,ASSY,ZR	1
2	1687066	PLT,CVR,SLIDE	1
3	0100559	WASH,FLT.25X.62X.06 ZY HDN	2
4	1414342	PIN,REACH CYLINDER	1
5	1134366	SCR,CAP,HEX.25-20X.75 G8 ZY	2
6	1473018	PIN,ARM STOP	1
7	2CH20	PIN,COT,EP.19X1.50 ZC	1
8	0005460	SCR,SET,SOC,CP.38-16X.50 BO	2



D. STANDARD 6FT REACH OUTER SLIDE TUBE ASSEMBLY

Item #	MTM Part #	Description	Qty
1	1506686	TUBE,SLIDE,OUTR,TUBE,FLR,ASSY	1
2*	1506687	TUBE,SLIDE,OUTR,TUBE,FLR,WLDT	1
3	1414338	ROLLER,CAM,3",W/SEALS	2
4	1414411	PIN,SLIDE ROLLER,WLDT	1
5	1414415	SPACER,SLIDE ROLLER,CENTER	1
6	1243637	SCR,FLG,HEX.38-16X1.25 G8 ZY	3
7	0115166	FTG,ST,STD GREASE, .12 NPT	4
8	1271782	BRKT,PIVOT	1
9	1675151	HOOK,LOCKING,ARM	1
10	1138687	SCR,CAP,HEX.62-11X3.00 G8 ZY	1
11	0120181	NUT,JAM.62-11 GA ZC	2
12	0100565	WASH,FLT.62X1.31X12 ZY HDN	7
13	0100486	NUT,HEX.25-20 G5 ZC	2
14	0100559	WASH,FLT.25X.62X.06 ZY HDN	2
15	32291AX	SCR,CAP,SOC.25-20X.75 574 BO	2
16	1271783	CLEVIS,CYL.ROD.31-24X.25 PIN	1
17	0601469	CYL,AIR,THROTTLE,1" PULL	1
18	0120177	NUT,HEX,LKDT.38-16 GC ZC	3
19	1136882	SCR,CAP,HEX.62-11X6.00 G8 ZY	1
20	0005341	NUT,HEX,LKDT.62-11 GC ZC	2
21	1485529	ROLLER,SIDE	2
22	1106179	WASH,FLT.1.00X2.50X.19 ZY HDN	4
23	1504104	PIN,SLIDE ROLLER,WLDT	2
24	0120276	WASH,FLT.31X.69X.06 ZY HDN	2
25	1134436	SCR,CAP,HEX.31-18X1.25 G8 ZY	1
26	0120176	NUT,HEX,LKDT.31-18 GC ZC	2
27	1485525	ADJ,TENSION,ROLLER,WLDT	1
28	0620807	BEARING,INNER RACE	4
29	0640878	BRG-1" SMR SEALED	4
30	1134432	SCR,CAP,HEX.31-18X1.00 G8 ZY	1
31	1506259	BRKT,SENSOR MNT,ZR6	1
32	0120200	NUT,FLG,LKDT.38-16 GG CW	2
33	0100562	WASH,FLT.44X.94X.08 ZC	2
34	2CH20	PIN,COT,EP.19X1.50 ZC	2
35	1515394	RETAINER,CHAIN,BOOM,ZR,ASSY	1



ASSEMBLY BREAKDOWN NOTES:

- Item 1 includes items 2-34.
- *To order item 2, please order 6 ft Outer Slide Tube Assembly PN 1506686.
- Please note: Some items are not available as individual parts, but will be included as part of a kit as indicated above.

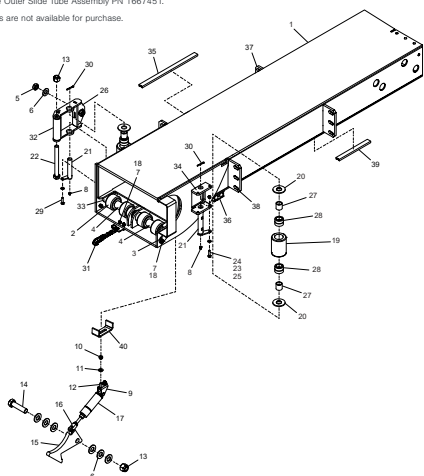
E. EXTENDED 12FT REACH OUTER SLIDE TUBE ASSEMBLY

MTM Part #	Description	Qty
1667451	OTR,MT,ZR,EXT,T,FLR,ASSY,MK3	1
1485515	OTR,MT,ZR,EXT,T,FLR,WLDT,MK3	1
1414338	ROLLER,CAM,3",W/SEALS	4
1470063	STR,SLIDE ROLLER,ZR,G1A,WLDT	2
1470059	SPACER,SLIDE RLR,CNTR,ZR,G1A	2
0120181	NUT,JAM.62-11 GA ZC	2
0100565	WASH,FLT.62X1.31X12 ZY HDN	7
1243637	SCR,FLG,HEX.38-16X1.25 G8 ZY	2
0115166	FTG,ST,STD GREASE, .12 NPT	4
1271782	BRKT,PIVOT	1
0100486	NUT,HEX.25-20 G5 ZC	2
0100559	WASH,FLT.25X.62X.06 ZY HDN	2
32291AX	SCR,CAP,SOC.25-20X.75 574 BO	2
0005341	NUT,HEX,LKDT.62-11 GC ZC	2
1136887	SCR,CAP,HEX.62-11X3.00 G8 ZY	1
1675151	HOOK,LOCKING,ARM	1
1271783	CLEVIS,CYL.ROD.31-24X.25 PIN	1
0601469	CYL,AIR,THROTTLE,1" PULL	1
0120177	NUT,HEX,LKDT.38-16 GC ZC	2
1485529	ROLLER,SIDE	2
1106179	WASH,FLT.1.00X2.50X.19 ZY HDN	4

Item #	MTM Part #	Description	Qty
21	1504104	PIN,SLIDE ROLLER,WLDT	2
22	1136882	SCR,CAP,HEX.62-11X6.00 G8 ZY	1
23	0120276	WASH,FLT.31X.69X.06 ZY HDN	2
24	1134436	SCR,CAP,HEX.31-18X1.25 G8 ZY	1
25	0120176	NUT,HEX,LKDT.31-18 GC ZC	2
26	1485525	ADJ,TENSION,ROLLER,WLDT	1
27	0620807	BEARING,INNER RACE	4
28	0640878	BRG-1" SMR SEALED	4
29	1134432	SCR,CAP,HEX.31-18X1.00 G8 ZY	1
30	2CH20	PIN,COT,EP.19X1.50 ZC	2
31	1515394	RETAINER,CHAIN,BOOM,ZR,ASSY	1
32	1485520	TUBE,PIVOT,LG	1
33	1414404	COLLAR,SIDE	1
34	1485524	PLT,ROLLERS,SUPPORT	1
35	1257943	RAIL,HYD MT 18.50	1
36	1236308	CLAMP,1IN STAUFF DBL WELD MT	2
37	1476687	PLT,TUBE,FLR,MT,EXT,S	2
38	1476688	PLT,TUBE,FLR,MT,EXT,L	2
39	1259861	CHANNEL,HYDZB,HYD 10.00" LONG	1
40	1457053	MOUNT,CYL,ARM	1

ASSEMBLY BREAKDOWN NOTES:

- Item 1, please order the Outer Slide Tube Assembly PN 1667451.
- Note: Some hardware items are not available for purchase.

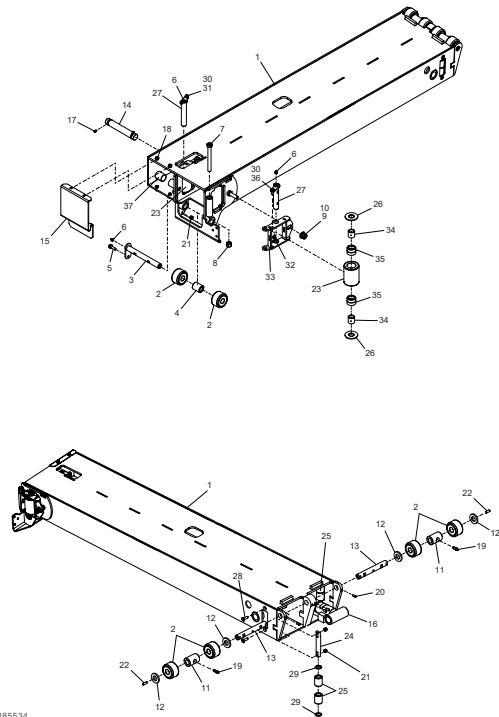


F. EXTENDED 12FT REACH INTERMEDIATE SLIDE TUBE ASSEMBLY

Item #	MTM Part #	Description	Qty
	1485534	INTERMEDIATE TUBE,ZR,ASSY,MK3	1
1	1485535	SLIDE,OUTR,ZR,WLDT,MK3	1
2	1414338	ROLLER,CAM,3",W/SEALS	6
3	1414411	PIN,SLIDE ROLLER,WLDT	1
4	1414415	SPACER,SLIDE ROLLER,CENTER	1
5	1243637	SCR,FLG,HEX.38-16X1.25 G8 ZY	1
6	0115166	FTG,ST,STD GREASE, .12 NPT	4
7	1136882	SCR,CAP,HEX.62-11X6.00 G8 ZY	1
8	0005341	NUT,HEX,LKDT.62-11 GC ZC	1
9	0100565	WASH,FLT.62X1.31X12 ZY HDN	1
10	0120181	NUT,JAM.62-11 GA ZC	2
11	1470121	SPACER,SLIDE RLR,CNTR,ZR,G1A	2
12	1414414	SPACER,ROLLER	4
13	1469918	PIN,ROLLER,INNER BOOM,ZR,G1A	2
14	1469922	PIN,CYLINDER,ROD SIDE,IMTD	1
15	1469919	PLT,CVR,SLIDE,ZR,G1A	1
16	1489096	CYL,SPL,1.75X56.75X1.25,EXT R	1
17	0005460	SCR,SET,SOC,CP.38-16X.50 BO	2
18	1241613	SCR,FLG,HEX.31-18X.75 G5 ZY	4
19	1433603	FTG,ST,STD GREASE, .12NPT X 1.25 ST	2
20	1371186	SCR,SET,SOC,CP.31-18X.75 BO	4
21	0120177	NUT,HEX,LKDT.38-16 GC ZC	5
22	1244660	SCR,SET,SOC,CP.38-16X1.00 BO	2
23	1485529	ROLLER,SIDE	2
24	1485547	PIN,SUPPORT ROLLER	2
25	1485548	ROLLER,END	4
26	1106179	WASH,FLT.1.00X2.50X.19 ZY HDN	4
27	1485530	PIN,SIDE ROLLER,WLDT	2
28	0623858	SCR,FLT,SOC.38-16X1.25 835 BO	4
29	1485549	WASHER,ROLLER,END	4
30	0120276	WASH,FLT.31X.69X.06 ZY HDN	2
31	1134436	SCR,CAP,HEX.31-18X1.25 G8 ZY	1
32	0120176	NUT,HEX,LKDT.31-18 GC ZC	2
33	1485525	ADJ,TENSION,ROLLER,WLDT	1
34	0620807	BEARING,INNER RACE	4
35	0640878	BRG-1" SMR SEALED	4
36	1134432	SCR,CAP,HEX.31-18X1.00 G8 ZY	1
37	1489111	SPACER,CYL,1.50 OD X 1.62 LONG	2

ASSEMBLY BREAKDOWN NOTES:

- PN 1485534 includes items 1-37.
- *To order item 1, please order the 12 ft Intermediate Slide Tube Assembly PN 1485534.
- Please note: Some hardware items are not available for purchase.





Front Loader Tools and Accessories

Arms & Forks

FORK, TINE, ATL



Part Numbers:

59.00	1413321
67.00	1413322

FORK, EXT TINE, LH W/TIP



Part Number:

1556387

Body Parts

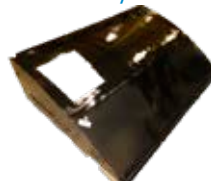
DOOR, HPR, ACCESS, STL, LH, WLDT



Part Number:

1579501

CANOPY, RH EXHAUST



Part Number:

1429867

CANOPY, FOLDING, EXH, 08



Part Numbers:

LH	1372528
RH	1372523

JACK, CAB/CANOPY LIFT



Part Number:

1270289

Brackets

BRKT,HOLD DOWN,UPR



Part Number:

1548453

Bumpers

ARM REST,BUMPER



Part Number:

616780

Kits

KIT-DEUTSCH PARTS



Part Number:

1107264

Guards

WINDGUARD,LW,WLDT



Part Numbers:

RH	1510387
LH	1510390

WINDGUARD,HD,RH,WLDT



Part Number:

1560734

Cylinders and Accessories

CYL,FORK,CUSHIONED,PAC

Part Number:



1372285

CYL,2.50 X 3.00 X 1.00,TG,LOCK

Part Number:



1598318

CYL,3.5X2X26,FORK,ATL 14,CUSH

Part Number:



1597229

CYL,2.25 X 3.00 X 1.13,TG,LOCK

Part Number:



1489497

CYL,EJR,43/45YD ATL,EXCAL5.5

Part Number:



1543848

CYL,EJR,STG3,5.5X3X164,36/40YD

Part Number:



1543847

CYL,STG3 5.50X3.00X182.50

Part Number:



1489241

CYL,2.00X20.00X1.25,FORK,ADJ

Part Number:



1144705

CYL,3.50X2.00X26.00,FORK

Part Number:



1144704

CYL,3.25X2.00X38.00,TG,ATL

Part Number:



1144703

CYL,2.00X1.50X95.00,T DOOR

Part Number:



1144702

CYL,AIR,2.50X8.00,W/O FTGS

Part Number:



107616

Liners

LINER,EJR TRK XWEAR 2.5X120.0



Part Number:

1253397

Packers

FILTER-PKR RTN



Part Number:

604429

Wearables

SHOE,EJR,XWEAR



Part Numbers:

LH	1484824
RH	1484823

SHOE,EJR,45YD,XWEAR



Part Number:

1180839

GST, EJR SHOE R ATL



Part Number:

661383

EJ SHOE WLDT



Part Number:

617280

SHOE,EJR,XWEAR,HD,WLDT,FL78



Part Number:

1564554

SHOE,EJR,XWEAR,RH



Part Number:

1262270

Weldments

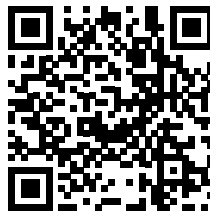
DOOR,CLEANOUT,FLIP UP,WLDT



Part Number:

1106857

Scan the QR code on the right to quickly find more parts, diagrams, and details tailored to your specific unit.



Interactive
Parts Catalogue







McNeilus rear loader trucks are built for durability and dependable performance in demanding refuse collection routes. Designed for efficiency and operator ease, these trucks deliver powerful compaction, reliable hydraulics, and long-lasting productivity for waste and recycling operations.

Rear Loader Tools and Accessories

Body Parts

BLK,SLIDE,UPR,HIGH COMPAC,TG



Part Number:

1100344

SEC-VA35,PARA,3WAY W/SPRET



Part Number:

614168

Cylinders and Accessories

CYL,EJR,32YD,NIT,W/O SCRAPER



Part Number:

1604959

CYL,3.50X3.00X42.00 TG,XC



Part Number:

1401205

CYL,LOCK,W/CLV,2.5X2.5X1.13



Part Number:

1465574

CYL,4.50X3.50X25.62 PKR,3.5YD



Part Number:

1419922

CYL,5.00X4.00X25.62 SWP,XC
Part Number:



1419919

CYL,5.00X4.00X32.50,SLIDE,HD
Part Number:



1419165

CYL,TPR SLAVE,1.75X1.82X .625
Part Number:



1328040

CYL,MASTER TPR,SSPIII,IV
Part Number:



1328039

PIN CYLINDER, ROD SIDE,INNER
Part Number:



1469923

CYL,3.5X3.0X38 TG,HD
Part Number:



1432532

Liners

LINER,FORMED,TAPERED FLR
Part Number:



1273313

LINER,TAPERED FLR SHELF,14.00
Part Number:



1106533

LINER,HPR BTM,1/4",08
Part Number:



1489553

LINER,TG HPR BTM
Part Number:



606575

LINER,HPR BTM,3/16",AR400,08
Part Number:



1489678

LINER-UPR TG S, 08
Part Number:



604878

Packers

FILTER-PKR RTN



Part Number:

604429

PACKER, PANEL, LIGHTWEIGHT



Part Number:

603681

Bars LT BAR,FRNT PLT,WHELEN,RL



Part Number:

1428136

Call us today or visit us online to view our full line of products!

Wearables

SHOE,BTM GD,RL EJR



Part Number:

604909

SHOE,GLIDE,BTM



Part Number:

673056

SHOE, TOP GD,RL EJR



Part Number:

604908

SHOE,03, UPR,QUICK CHANGE



Part Number:

605490

STRIP-WEAR, LWR Q/CHG SHOE



Part Number:

605484

STRIP-WEAR,UPR 08 Q/CHG SHOE



Part Number:

605482

SLIDE SHOE PIN RTNR



Part Number:

605449

SHOE,SPLIT EJECTOR, TOP



Part Number:

1460386

Weldments

ROD,TG PROP,WLDT



Part Number:

1130500

STEP,BOLT ON,NON SKID,LH,WLDT



Part Number:

1472162

PANEL, WIPER RL, WLDT



Part Number:

603870

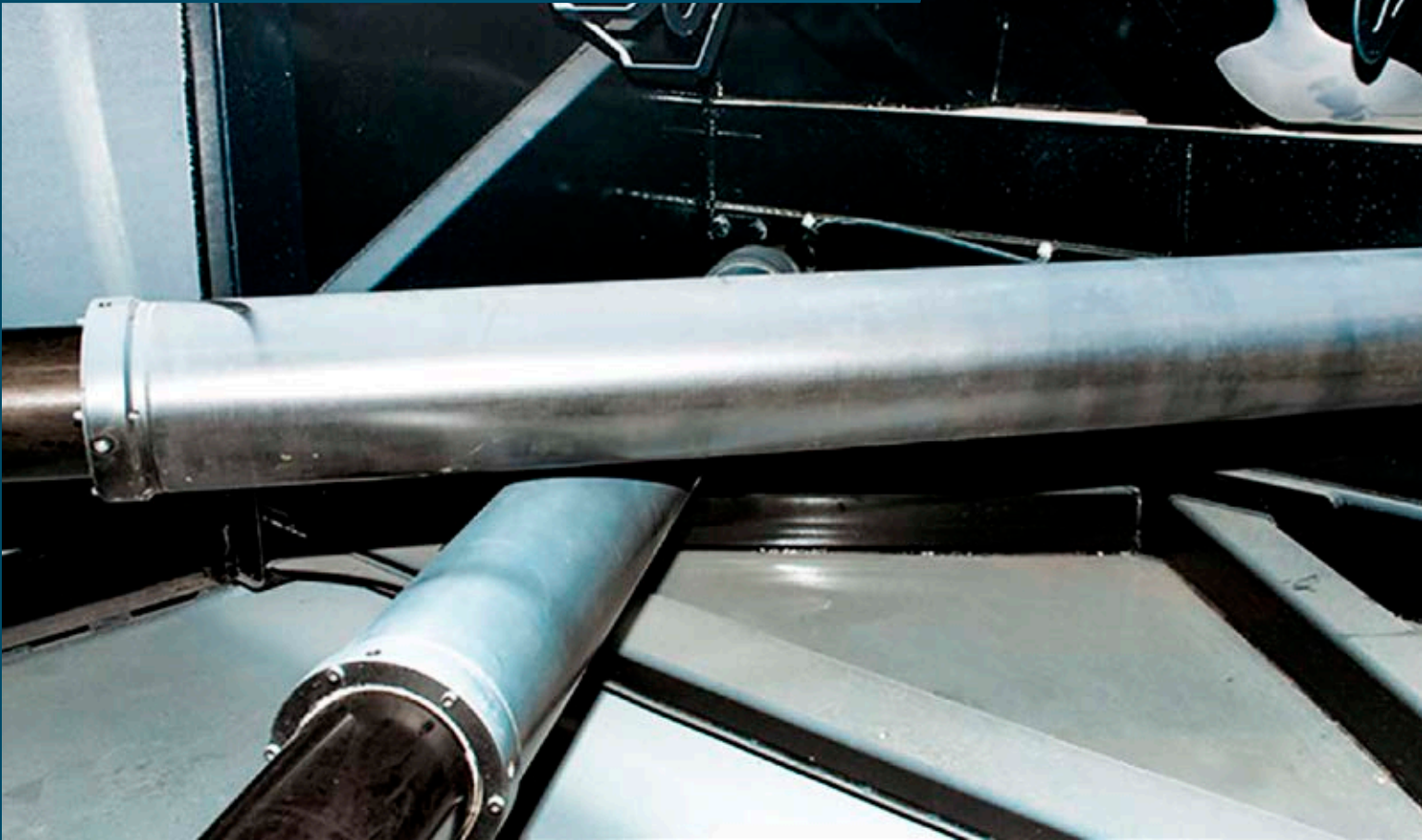
Wearable parts on a refuse truck naturally experience heavy use and gradual wear during daily collection routes. Regular inspections and timely replacement of these components help prevent unexpected breakdowns and keep trucks operating safely and efficiently.

Ask about HAAKER preventative maintenance plans to keep equipment running reliably.



EXCALIBRE CYLINDERS

EXCALIBRE CYLINDERS



EXCALIBRE™ Cylinders

Up to 80% of hydraulic contaminants can enter through the packing cylinders. Excalibre™ cylinders feature hardened nitrided rods and a patented tool steel shaver that helps keep refuse debris out, reducing hydraulic contamination.



Extend Service Life, Reduce Cost of Ownership

Every McNeilus refuse truck comes with Excalibre™ packing cylinders, each of which features a nitrided rod and patented tool steel shaver. The design reduces wear and hydraulic contamination, extending uptime and service life.

Cylinder Specifications:

- Single or double acting telescopic cylinders
- Single stage cylinders
- Salt-bath nitrided rods provide an extremely hard surface
- Improved corrosion and wear resistance
- Reduced weight, faster cycle time, and crossover relief protection

Shaver Specifications:

- Patented M2 tool steel positive contact shaver
- Helps protect cylinder from scratching or other potential surface damage
- Virtually eliminates foreign contamination from entering the hydraulic system by removing foreign objects or substances from cylinder rod surface
- Shaver is part of high-tech seal configuration to help prevent ingestion

WATCH IT IN ACTION

Watch the comparison video to see rugged Excalibre cylinders outperform competitors in durability, reliability, and performance.



EXCALIBRE™ CYLINDERS FOR McNEILUS MODELS

PART #	MODEL	CYLINDER TYPE	DESCRIPTION
1543847	Front Loader - Atlantic 36 and 40 CU YD	Pack/Eject	CYL,EJR,STG3,5.5X3X164,36/40YD
1580440	Front Loader - Atlantic 43/45 CU YD	Eject	CYL,EJR,43/45YD ATL,EXCAL5.5
1580497	Front Loader - Atlantic 36 and 40 CU YD	Pack/Eject	CYL,EJR,36/40YD ATL,EXCAL5.5
1543848	Front Loader - Atlantic 43 and 45 CU YD	Pack/Eject	CYL,EJR,43/45YD ATL,EXCAL5.5
1493335	Front Loader - Meridian	Pack/Eject	CYL,EJR,28-33YD,W/O LUGS,MED
1557327	Front Loader - Meridian	Pack/Eject	CYL,HYD,EJR,3STG,SHORT,81.5"CC
1489237	Front Loader - Pacific 36 and 40 CU YD	Pack/Eject	CYL,HYD,EJEC,TELE,PAC,EXCAL
1489241	Front Loader - Pacific 36 and 40 CU YD	Pack/Eject	CYL,STG3 5.50X3.00X182.50
1489239	Front Loader - Pacific CNG	Eject	CYL,STG3 5.50X3.00X136.50,PLUG
1423348	Rear Loader	Pack/Sweep	CYL,SWEEP,STD,MAILHOT
1604960	Rear Loader - 25 CU YD	Eject	CYL,EJR,25YD,NIT,W/O SCRAPER
1601875	Rear Loader - HD	Slide	CYL,5.00X4.00X32.50,SLIDE,HD
1601498	Rear Loader - HD, Tag Axle	Pack/Sweep	CYL,4.50X3.50X23.00,SWEEP,HD
1618244	Rear Loader - XC, XXC	Pack/Sweep	CYL,SWEEP,XC,EXCAL,MTM
1526762	Side Loader - AutoReach Gen 1	Pack/Sweep	CYL,HYD 4.50X52.75 PVT,PVT
1536126	Side Loader - AutoReach Gen 2	Pack/Sweep	CYL,HYD,22X4.5X48.75,AR GEN II
1568056	Side Loader - Manual/Automated	Pack/Sweep	CYL,PKR,4.00X3.00X54.50,MA
1646615	Side Loader - Zero Radius	Eject	CYL,EJR,ZR,SHORT,R2
1646617	Side Loader - Zero Radius	Eject	CYL,EJR,ZR,LONG,R2
1646616	Side Loader - Zero Radius	Eject	CYL,EJR,ZR,MEDIUM,R2
1572633	Side Loader - Zero Radius	Pack/Eject	CYL,EJR,ZR,SHORT
1572634	Side Loader - Zero Radius	Eject	CYL,EJR,ZR,MEDIUM
1572635	Side Loader - Zero Radius	Pack/Eject	CYL,EJR,ZR,LONG

EXCALIBRE™ CYLINDERS THAT FIT MOST MAKES AND MODELS

PART #	MODEL	CYLINDER TYPE	DESCRIPTION
1259503	Front Loader - EZ Pack, Hercules 40 and 44 CU YD	Pack/Eject	CYL,PKR,40/44YD,EZPAK, EXCAL
1493336	Front Loader - Heil	Eject	CYL,EJR,23-26YD,HEIL,W/O LUGS
1493335	Front Loader - Heil	Pack/Eject	CYL,EJR,28-33YD,W/O LUGS
1259502	Front Loader - Labrie / Wittke	Pack/Eject	CYL,PKR,WITTKE EXCAL
1259501	Front Loader - Labrie / Wittke 40 CU YD	Pack/Eject	CYL,PKR,WITTKE EXCAL
1263245	Front Loader - Labrie / Wittke 40 CU YD	Pack/Eject	CYL - 40 YD PKR,WITTKE,EXCAL
1263246	Front Loader - Labrie / Wittke 44 CU YD	Pack/Eject	CYLINDER PKR,44YD,WITTKE,EXCAL
1259506	Front Loader - Wittke 36 CU YD	Pack/Eject	CYL,PKR,WITTKE EXCAL
1273347	Side Loader - Amrep	Eject	CYL,PKR,UNV,AMREP,EXCAL
1632203	Side Loader - Labrie Automizer/Expert	Pack/Sweep	CYL,PKR,UNV,AMREP,EXCAL, 4"X40"



Side Loader Tools and Accessories

Arms and Grabbers

BELT,GBR GRIP,30/90&90/300

Part Number:

1108127



BELT,GBR,7000,HEIL

Part Number:

1140984



ARM,HEIL 7000,ASSY

Part Number:

1559053



ROLLER,CTNR,HEIL

Part Number:

1108988



H-BEAM,PYTHON ARM,HEIL

Part Number:

1237580



PIVOT,LEVEL,PYTHON ARM

Part Number:

1237585



Body Parts

INDICATOR, HYD
FILTER, HEIL



Part Number:

1106168

SEAL, TG, 10 FT, RR
HEIL



Part Number:

1109290

ANGLE, TG
SEAL, S, HEIL



Part Number:

1132216

GEAR, IDL, 11T,
W/O NUT, HEIL



Part Number:

1107841

Cylinders

CYL, REACH, 7000, HEIL



Part Number:

1136598

Hydraulics

VALVE, CARTRIDGE, RR, HEIL



Part Number:

1417010

HEAD, HYD FILTER, HEIL



Part Number:

1106165

GSKT, FILTER



Part Number:

1138726

GSKT, HYD FILTER, TNK



Part Number:

1106166

ACTUATOR, AIR, VA40, HEIL



Part Number:

1130955

Wearables

BUMPER, RBR 3.50X6.00



Part Number:

1130076

SPRING, HD, GBR FGR, 60/90, HEIL



Part Number:

1394210MTM

JOYSTICK, AIR, 5BTN



Part Numbers:

5 BTN	1455355
3 BTN	1588698

JOYSTICK, ELECTRIC, DS



Part Number:

1591952

Front Loader Tools and Accessories

Arms and Forks

BUMPER,FORK,BOLT ON,HEIL



Part Number:

1519008

PAD,ARM STOP,HEIL



Part Number:

1130756

Body Parts

CANOPY,CAB PROTECT,BLUE



Part Number:

1526865FLNA50661

KNOB,HAND,SUMP DOOR



Part Number:

1532868

CABLE,TG,123.00,HEIL



Part Number:

1108135

TURNBUCKLE, FL,HEIL ASSY



Part Number:

1130747

SEAL,SUMP DOOR,HP,HEIL



Part Number:

1545291

SENSOR,ARC,100 DEGREE,ODYSSEY



Part Number:

1587323

Packers

PLW BLK,EJR,HEIL



Part Number:

1108501

CAP,PLW BLK,EJR,HEIL



Part Number:

1106166

BASE,PLW BLK,EJR,HEIL



Part Number:

1141137

Wearables

SEAL,DOOR,CLEAN OUT, HEIL



Part Number:

1324009

PAD-BRASS WEAR



Part Number:

1109456

BAR,WEAR,PKR SHOE,LWR



Part Number:

1137050

Rear Loader Tools and Accessories

Body Parts

CARRIAGE ASSY
CLAMP



Part Number:

1139444

JOINT,BALL,LH .50-20



Part Number:

1143599

JOINT-CTRL LINK LH
THRD HEIL



Part Number:

1140391

Hydraulics

VALVE,TG,4 SEC,HE
5000,REV SEC



Part Number:

1544309

VALVE,RELIEF



Part Numbers:

1400 PSI	1130899
----------	---------

3900 PSI	1107454
----------	---------

VALVE,TG,4 SECTION,
HEIL 5000



Part Number:

1146393

Liners

LNR,SIDE PNL,UP REAR,HEIL5000



Part Number:

1546131

LINER,SIDE PNL,UP FWD,HEIL5000



Part Number:

1546127

Valves

VLV,RELIEF,V50,2500 PSE,25 GPM



Part Number:

1130896

VLV,RELIEF,LGE,1400 PSI



Part Number:

1130943

Wearables

BLK,SHOE,N/S,ALUM BRZ,HEIL4000



Part Number:

1108113

SHOE,EJR,HEIL PT1000



Part Number:

1404122

SW,PROX,30MM,NC,3PIN,DEU,HEIL



Part Number:

1611445

Call us today at (800) 200-3432
to find all Heil parts in stock.



Amrep Tools and Accessories

Keep your fleet running at peak performance with Amrep parts and tools designed for side, front, and rear loader configurations. From essential replacement components to specialized tools, each product is built to support reliable operation and long-lasting durability in demanding refuse applications. With options tailored to every loader type, you can count on the right fit, improved efficiency, and reduced downtime across your entire fleet.

Arms and Forks

PIN,CYL,GRABBER,SL,AMREP,WLDT

Part Number:

1574382



PULLEY BOX WELDMENT,ROAD SIDE

Part Numbers:

Road Side	1587395
Curb Side	1587357



BEARING,GREASELESS,FOLLOWER

Part Number:

1577321



PIN,SHEAVE,STD, 2.25X5.00,AMREP

Part Number:

1227661



Rods

ELEMENT,FLT,KDZ10,10 MIC,AMREP



Part Number:

1568674

PUMP,PERMCO,P5000



Part Number:

1233949

PUMP,PTO,280GGFJP-B5XD



Part Number:

1228663

9" SHEAVE BLOCK ASSY,CURB SIDE



Part Numbers:

Road Side	1587358
-----------	---------

Curb Side	1587355
-----------	---------

GAUGE,SIGHT,HYD TANK,W/TEMP



Part Number:

1587353

PIN,TAIL ROLLER SHAFT, AMREP



Part Number:

1587400

THIMBLE-CABLE,7/8",ROLL-OFF



Part Number:

654650

Kits

STANDARD ROLLER KIT,AMREP



Part Number:

1587407

Looking for something else? Call today to ask about rebuilt and aftermarket arms, cylinders, and other parts for Amrep refuse trucks.

Cylinders

REEVING CYLINDER,3"



Part Number:

1586950

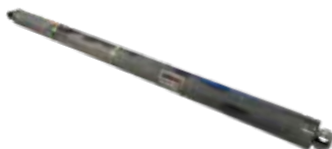
HOIST CYLINDER, 3"



Part Number:

1519524

STINGER CYL, 2.5" ROD



Part Number:

1586951

CYLINDER,PACK,ASL,AMREP



Part Number:

1552531

Rollers

CAGED ROLLER ASSEMBLY,AMREP



Part Number:

1587403

CAGED ROLLER, AMREP



Part Number:

1587404

PIN,CAGED ROLLER,W/GREASE FTG



Part Number:

1587398

PIN,ROLLER,LONG SIDE,AMREP



Part Number:

1587399

ROLLER W/BRONZE INSERT,AMREP



Part Number:

1587402

ROLLER,4.5 OD X 3.5 T X 2.5 ID



Part Number:

1587401

ROLLER,TAIL,AMREP



Part Number:

1587405

PIONEER ARM, PIVOT PIN W/ GREASE FITTING



Part Number:

1587397

AMREP LOCK RING



Part Number:

1587406

Body Parts

VALVE,AIR,3 WAY,HUMPHREY



Part Number:

1232896

SHEAVE,7/8" CABLE,10",W/BSHG



Part Number:

1587354

Call us today at (800) 200-3432 to find all Amrep parts in stock.







Side Loader Tools and Accessories

Arms and Grabbers

GRABBER, ASSY, NWAY, 96GAL

Part Number:

1660268



ARM, SPRING FGR, GBR, NWAY, SL

Part Number:

1558654



UPGRADE KIT, PROX SW, GBR HOME

Part Number:

1563572



PIVOT, GBR ARM DUAL FGR, WLDT

Part Number:

1659060



PIVOT, GBR ARM SINGLE FGR, WLDT

Part Number:

1659058



BACKING, SPRING FGR, GBR, NWAY, SL

Part Number:

1558655



Body Parts

SWITCH,PROX,
18MM,NWY



Part Numbers:

18 MM	1539765
30 MM	1539891

ELEMENT,RTN
FLT,10 MIC



Part Number:

1539764

CABLE,65 FT,
SAFETY VISION



Part Number:

1146802

LIGHT,MODULE,
STROBE,MARLIN



Part Number:

1584179

HARNESS,PROX SWITCH,NWY



Part Number:

1567967

E-STOP,SWITCH,NEW WAY



Part Number:

1539814

Bumpers

BUMPER,CTR MAST,INR,ARM STOP



Part Number:

1555572

Cylinders

CYL,GBR,2X5.5X1.25,NWY,SL



Part Number:

1519568

Filters

FILTER,10 MICRON,
NEW WAY



Part Number:

1460481

Hydraulics

VALVE,FLOW DIVIDER,
GRIPPER,NWY



Part Number:

1584369

Motors

ASSY,PUMP,PTO,NWY,KC



Part Number:

1563611

Wearables

END,FINGER,PLAS,GBR



Part Number:

1659668

KNOB,END,GRIP,
UHMW, NWY



Part Number:

1519524

BUMPER,RBR,FINGER,
GRIP,NWY



Part Number:

1519523

Front Loader Tools and Accessories

Body Parts

SWITCH,PROX, 18MM,NWY



Part Numbers:

18 MM	1539765
30 MM	1539891

ELEMENT,RTN FLT,10 MIC,IN TANK



Part Number:

1539764

CABLE,65 FT,SAFETY VISION



Part Number:

1146802

LIGHT,MODULE,STROBE,MARLIN



Part Number:

1584179

HARNESS,PROX SWITCH,NWY



Part Number:

1567967

STRAINER,SUCTION,NWY



Part Number:

1563603

E-STOP,SWITCH,NEW WAY



Part Number:

1539814

Filters

FILTER,10 MICRON, NEW WAY



Part Number:

1460481

Motors

ASSY,PUMP,PTO,NWY,KC



Part Number:

1563611

Rear Loader Tools and Accessories

Liners

LINER,HOPPER FLOOR,1/4",NWY,KC



Part Number:

1563610

LINER,HOPPER,BACK,1/4",NWY,KC



Part Number:

1582829



Packers

KIT,UPR SLIDE SHOE,LH



Part Number:

1554108

SHOE KIT,EJECT WEAR



Part Number:

1559946

TUBE,SLIDE/SWEEP PIVOT



Part Number:

1554113

Wearables

SEAL,RUBBER,TG, STD



Part Number:

1539048

KIT,UPR SLIDE SHOE



Part Numbers:

LH	1554112
RH	1554106

KIT,LOWER SHOE,SLIDE



Part Number:

1554109

Call us today at (800) 200-3432 to find all New Way parts in stock.



Part Number:

Side Loader Tools and Accessories

Arms and Grabbers

GRABBER,BASE,HD,LABRIE,ASSY

Part Number:



1650025

PIVOT,GBR FGR,WLDT,HH,LAB

Part Numbers:



REAR	1566546
FRT	1566555

JOYSTICK,ELEC,LABRIE

Part Number:



1537609

PIVOT,FINGER,DUAL,HD,LAB,WLDT

Part Number:



1573942

ARM,LEVELING,HD,LAB,ASSY

Part Number:



1566661

PIVOT,GBR FGR,WLDT,RH ARM

Part Number:



SGL	1537725
DUAL	1566754

FINGER,GRBR,300
GAL,HD,LAB



Part Number:

1566695

ROLLER,CAM,3"
W/SEALS



Part Number:

1414338

PIN,PVT,FGR,
GBR,HD,LAB



Part Number:

1573938

BRG,GUIDE ARM,
RH,HD,LAB



Part Number:

1566677

Body Parts

LATCH,LABRIE



Part Number:

1394173

FILTER,ELEMENT,10
MICRON



Part Number:

1108707

BRG,SHAFT,PVT,MAIN,
HD,LAB



Part Number:

1570573

Cylinders

CYL,ROOF,LABRIE



Part Number:

1156051

CYL,GRAB,1.50" PIN



Part Number:

1542445

CYL,EXTENSION,ARM



Part Number:

1537736

Hydraulics

CAP,HYD,PRESSURIZED,1"THREAD



Part Number:

1542540

VALVE,CARTRIDGE,FLOW CNTRL,HYD



Part Number:

1570719

Wearables

SHOE,BLADE,LABRIE



Part Number:

1394171

SEAL RUBBER,CLEAN
OUT, LABRIE



Part Number:

1564520

BUMPER,RBR,LABRIE



Part Number:

1537745

PAD,TIP ARM GRAB



Part Number:

1543128

PAD,WEAR,FLWR PNL,6
HOLE,LAB



Part Number:

1583702

PLT,WEAR,LRG PLS,INR
TUBE,HD

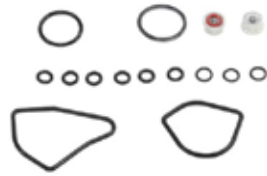


Part Number:

1566669

Kits

KIT,SEAL,PVM



Part Number:

1502625

Front Loader Tools and Accessories

Body Parts

VALVE,MAC,MULTIPLEX



Part Number:

1542477

VALVE,FLOW DIVIDER,LABRIE HD



Part Number:

1582052

STRAP,ASSY,2RIII



Part Number:

1675191

FTG,ODC 4NPT-4 M ST



Part Number:

1262776

BUSHING,LATCH,2RIII



Part Number:

1675768

BRG,SPHRCL,SBB-36-2RS,MTM



Part Number:

1403396

LABRIE MAC AIR VALVE



Part Number:

1475466

COIL & CARTRIDGE,DUMP VALVE



Part Number:

1537606

SWITCH,PROX,ASSY,30MM,SHORT



Part Number:

1542469

SOLENOID,DBL AIR,EXPERT 2000



Part Number:

1537068

Call us today at (800) 200-3432 to find all Labrie parts in stock and ready to ship. Our team can quickly help you locate the components you need so you can reduce downtime and keep your refuse trucks operating at full efficiency.



Rear Loader Tools and Accessories

Wearables

BUSH,WEAR,SLIDE,S.B.,LAB

Part Number:

1680554



RETAINER,SHOE,S.B.,LAB

Part Number:

1684329



SHOE,LOWER,S.B.,LAB

Part Number:

1684995



BUMPER,RUBBER,6IN,2RIII

Part Number:

1675755



Cylinders

CYL,CART TPR,LABRIE

Part Number:

1156052





Scan For More Info



Stetco Clamshell Bucket Trucks

At Haaker Equipment Company, we're proud to offer Stetco's groundbreaking, environmentally-friendly solutions for managing municipal drainage operations, fully compliant with EPA stormwater requirements. Stetco's clamshell bucket trucks are innovatively designed to extract water while removing hefty debris to drastically cut down on unproductive dump trips. The adaptability of Stetco equipment enable digging in dry conditions, removing the necessity to produce slurry.



The Stetco Difference

Stetco Catch Basin Cleaners clean large volumes of heavy, abrasive and cumbersome debris from stormwater structures and other collection points – with zero liquid discharge. Stetco machines provide a complementary alternative to vac-trucks, at substantially lower cost of ownership.

Features:

- Load solids, not slurry
- Buckets squeeze out liquids and load only solid debris
- No need to carry and discharge water



Orange Peel



Rectangular Clamshell



Round Clamshell



950 Combination Unit

Features:

- Radial piston diaphragm pump jets laterals up to 18" with 1/2" hose
- Up to 4000 PSI at 12 GPM
- 300 gallon water tank
- 300 feet of jetting hose reel
- Equipped with high-pressure, low-volume water jetting system
- Depths down to 50 feet below grade



950T/15

Features:

- 15' hydraulic boom outreach
- Depths down to 100 feet below grade
- Stainless steel, watertight debris body 5-8 yd³ capacity
- Stabilizers for largest Stetco buckets
- Tested on over 140,000 fully loaded cleaning cycles



920 SP14

Features:

- 14' hydraulic boom outreach
- Depths down to 35 feet below grade
- Non-CDL 2-3 yd³ debris body
- Mounted on a Ford F-550 chassis for tight municipal confines
- Handles most bucket sizes



950T/13

Features:

- 13' hydraulic boom outreach
- Depths down to 100 feet below grade
- Stainless steel, watertight debris body 5-8 yd³ capacity
- Stabilizers for largest Stetco buckets
- Tested on over 140,000 fully loaded cleaning cycles

Stetco Clamshell Buckets



Orange Peel

Features:

- Sizes available: 13" and 15"
- Max blade opening up to 36"
- Volume capacity up to 1.3 ft³



Orange Peel - Long Blade

Features:

- Sizes available: 15", 18", & 24"
- Max blade opening up to 48"
- Volume capacity up to 3 ft³



Rectangular Clamshell

Features:

- Sizes available: 12" and 20"
- Max blade opening up to 35"
- Volume capacity up to 4 ft³



Rounded Clamshell

Features:

- Sizes available: 10" and 12"
- Max blade opening up to 34"
- Volume capacity up to 1 ft³



Seek Thermal Fire Detection Sensors

Fires in garbage trucks are an escalating problem, driven by the increasing improper disposal of batteries. These fires can have devastating consequences if left undetected, risking lives, property, and causing significant downtime. Seek Thermal's advanced fire detection kit offers a comprehensive solution designed to monitor, alert, and protect.

Key Features



- Dual thermal sensors for full compactor coverage
- 12V PoE switch powered by truck battery
- Rugged in-cab display with live thermal feed
- All-in-one kit with mounts and cabling
- Early fire detection minimizes damage
- Real-time in-cab alerts
- Wide-angle sensors for complete visibility
- Improves safety, protects lives and assets



By continuously monitoring the compactor for early signs of fire, Seek Thermal triggers immediate in-cabin alerts, enabling prompt action to mitigate risks and enhance operational safety.

Guardian Series TQ-AAA

Using Seek's proprietary multi-sensor technology, the system can detect early signs of fire within the compactor and trigger alerts to drivers for a rapid response. This all-in-one system includes two Seek fire detection sensors, a power box module, all required cables and mounting hardware, and an in-cabin display for real-time monitoring and alerts.



Features:

- 320 x 240 Thermal sensor
- 56° x 42° Field of View
- -4°F to 1,022°F (-20°C to 550°C) detection range
- Web browser set up, configuration, and viewing
- Power and communication over Ethernet
- On-camera analytics and alarm functionality
- IP67 rating for harsh environments
- Camera Dimensions: 105 x 50 x 50 mm (4.13 x 1.97 x 1.97 in.)



Accurate, automated, and affordable



Detect and dump fires before they get out of hand



Easy to install, simple to operate, and built to last



In-cabin display with real-time monitoring and alerts



Notifies truck operators with visual and audible alarms



Specifically designed for garbage trucks

In Cabin Display



Features:

- Rugged touchscreen display
- Clear visual alarms
- Audible, instant communication
- Continuous live feed of thermal imaging
- Real-time monitoring



Technical Summary

Alarm Response Time	< 3 seconds
Continuous Live Feed	Yes
Visual In-Cabin Alarm	Yes
Audible In-Cabin Alarm	Yes
Temperature Range	-4°F to 1,022°F (-20°C to 550°C)
Operating Temp	14°F to 140°F (-10°C to 60°C)
Display	5" Touch Display
Input Voltage (PoE)	12V
Sensor Size	4.13 x 1.97 x 1.97 inches (105 x 50 x 50 mm)
Sensor Weight	0.75 lbs (340 grams)



Tippers

HAAKER Refuse supplies durable cart tippers from Perkins and ROTAC, delivering reliable, heavy-duty solutions for efficient and safe waste handling operations. These tippers handle a wide range of container sizes and tough duty cycles, helping crews work faster while reducing manual strain and improving safety during collection. With 90 and 40 years experience respectively, ROTAC and Perkins have been trusted American manufacturers and suppliers leading the waste industry.

Industries Served



- **Municipal Waste:** Helps crews lift and dump carts faster and safer.
- **Industrial Waste:** Moves scrap and waste with less manual effort.
- **Recycling Operations:** Lifts heavy recycling carts for faster sorting.
- **Commercial Facilities:** Makes waste handling easier for schools, hospitals, and campuses.
- **Specialty Applications:** Adapts to custom waste systems and unique operations.

Waste can tippers make lifting and emptying heavy carts safer and easier. Built for refuse trucks and waste facilities, they reduce manual strain on crews while improving efficiency and keeping collection operations moving smoothly.



PERKINS D6220B

Features:

- Type B containers up to 96 gallons
- 6-8 seconds/lift at 3.5 gpm flow rate
- Mounting heights 36-41"
- Tuck away and kick bar compatible
- Rear-load
- Adjustable flow control valve
- 27,000 inch-lbs of torque at 3000 psi



PERKINS D6080CB

Features:

- Type B containers up to 96 gallons
- Lifts 400 lbs. @ 3,000 psi
- Mounting heights 38.5-42"
- Grease-free and low maintenance
- Tuck away
- Rear-load
- Break-away feature minimizes damage



PERKINS MC6220

Features:

- Type B containers up to 96 gallons
- Lifts 400 lbs. @ 1,500 psi
- Mounting heights 38.5-42"
- 6-8 seconds/lift at 3.5 gpm flow rate
- Tuck away and kick bar compatible
- Rear-load
- 27,000 Inch-lbs of torque at 3000 psi



ROTAC Recoil - A010220

Features:

- Type B containers
- Lifts 800 lbs. @ 3,000 psi
- Mounting heights 35-39.5"
- Tuck away
- Kick bar compatible
- Rear-Load
- Durable, heavy-duty steel construction



ROTAC Scoop - A010050

Features:

- Type B containers
- Lifts 800 lbs. @ 3,000 psi
- Mounting heights 35-39.5"
- Slim profile
- Rear-load
- Consistent cart engagement on uneven terrain



ROTAC RTC - A010327

Features:

- Type C containers
- Lifts 800 lbs. @ 3,000 psi
- Mounting heights 35-39.5"
- Tuck away
- Kick bar compatible
- Rear-load
- Low maintenance design



ROTAC Beast - A010200

Features:

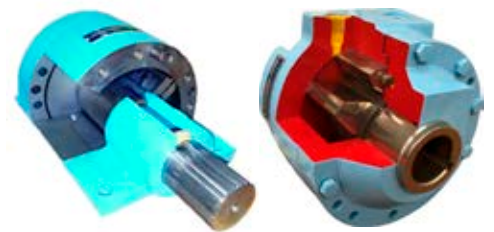
- Type B and ¾ containers
- Lifts 1,000 lbs. @ 3,000 psi
- Mounting heights 35-39.5"
- Tuck away
- Kick bar compatible
- Rear-load
- 27,000 in/lbs torque



ROTAC Long Arm - A010240

Features:

- Type B containers
- Lifts 800 lbs. 80" high @ 3,000 psi
- Mounting heights 49-61"
- Adjustable or fixed arm length options
- Side-load
- Industry leading 45,000 in/lbs torque



Rotac Rotary Vane Actuator

Rotac's patented rotary vane actuator features only one moving part, reducing the risk of mechanical failure and the cost of maintenance.



Scan For More Info



Sonetics Wireless Headsets

Avoiding loud noises isn't always possible. For people who work in construction, public works, manufacturing, transportation, and other vital industries, loud noises are simply a matter of day-to-day life. Protect hearing without disconnecting you from your surroundings with Sonetics wireless headsets and accessories.

APEX 3-Series DECT7 Wireless Headsets

Designed with team communication in mind and excellent range, these headsets are ideal to keep your team safe. With listen-through technology, you are in control of how much outside sound you let in for awareness and safety. This remarkable technology allows you to hear what is important while protecting yourself from NIHL.

APX377



Features:

- Includes DECT7 Wireless Technology
- Hands-free operation
- All-day comfort
- Extended battery life up to 24 hours

APX379



Features:

- Stereo listen-through
- Site-covering range
- Better protection
- Includes personal sound dosimeter

Personal Headsets With Advanced Hearing Protection

Sonetics next-generation direct-wire headsets pick up where foamies and earmuffs leave off. Protect your hearing while you get the job done. Experience all-day comfort and rugged performance in high noise environments. Models APX373 and APX379 include a talk related feature in their design.

APX372



APX373



APX379



Features:

- Hands-free operation
- All-day comfort
- Stereo listen-through

All headsets are available in a variety of color options.



DECT7 Portable Wireless ComHub



Features:

- Rugged bag design
- Share & share alike with 2-way radio connection
- Connect up to 15 Apex 3-Series wireless headsets
- Pair an APX379 wireless headset simultaneously with up to four SON150 wireless base stations
- Multi-channel system
- Two-way radio integration
- DECT digital encryption
- Connect up to 100 Apex 3-Series wireless headsets

User System Configurations

Up to 3 Users



Up to 5 Users



Up to 10 Users



Contents:

- APX377 or APX379 wireless DECT7 headsets; number of headsets in each pack based on number of users for each configuration is designed for (ie. 3, 5, 10)
- Battery-powered portable Com-Hub with DECT17 wireless base station
- Waterproof
- With 12V or 120/240V charging options

Portable Radio Cable Adapters

Connect your Apex 3-Series wireless headset or Portable Wireless ComHub to a portable two-way radio. Compatible with more than 400 radio models from manufacturers like Motorola, GE, Ericsson, Harris, ICOM, Kenwood, Maxon, Midland, Relm, Standard, Tait, Vertex, and many others.



Features:

- One-to-one or one-to-many
- Split push-to-talk
- Connect with no additional tools
- Easy to use
- Essential for team communication
- Transmit over either a ComHub connected portable radio and/or one direct-wired to the headset

Featured Accessories

Sonetics Headbands



Hard Hat Adapters



Li-ion Replaceable Batteries



Ear Seals



Hygiene Kits



Wall Chargers



System Charging Case

The key to success is good communication. That is what has made Haaker Equipment Company into what it is today and is the foundation of every successful project. When you are working on municipal projects, where communication is key, we offer you the solutions to communicate effectively, productively, and safely. Not only do we have individual solutions but we have a case for you to store it all.



Features:

- Simple and easy charging
- Includes single 120V wall adapter
- Rugged and robust design
- Watertight Pelican storm case
- Custom dividers for wireless headsets and ComHub
- Easy mobility
- Easy to store
- Ideal for teams of any size
- Telescoping pull handle
- Inset wheels
- Featured accessory for your team





Whelen Safety & Work Lights

Whelen products are proudly designed, manufactured, and tested on-site in America. Each product is built to meet even the toughest industry certifications. All Whelen products can be proven to deliver success every time. We are proud to offer Whelen products to ensure you and your team make it home safely at the end of the day.

Beacons

L31 & L32 Series



Features:

- Powder coated die-cast base
- Conformed coated electronics
- Die cast aluminum base
- Super LED beacon
- Flash multiple patterns alternately or simultaneously
- Cross link with up to 8 Whelen Super LED beacons

L50 Series



Features:

- Super LED beacon
- Twist-off polycarbonate dome
- Available in combination magnetic and suction mounts
- Polycarbonate base

Want to learn more?

Call us today or visit us online to view our full line of Whelen products.

Lightbars

Cenator™



Features:

- Lighthouse modules mount in any position
- Extruded aluminum platform
- Advanced thermal design to improve LED performance
- Optional red, blue, or amber internal filters
- Clear outer domes with optional color tops

Freedom® IV DYAD™ Series



Features:

- Linear super LED technology
- Extruded aluminum platform
- Center dividers with liquid injection molded seals
- One piece UNI-DOME construction
- Advanced thermal design to improve LED performance

Legacy® Series



Features:

- Extruded aluminum platform
- Advanced thermal design to improve LED performance
- Aluminum top repels hail and other environmental damages
- Center dividers with liquid injection molded seals
- Available in clear or smoked lenses

Liberty™ II Series



Features:

- Aluminum top repels hail and other environmental damages
- Center dividers with liquid injection molded seals
- Advanced thermal design to improve LED performance
- Extruded aluminum platform
- Available in clear or smoked lenses

Justice® Series



Features:

- Advanced thermal design to improve LED performance
- Extruded aluminum platform
- Easily upgraded or serviced in the field
- Available in clear or smoked lenses
- Brake, tail and turn options available

Towman's Series - Liberty II - Century - Freedom IV - Justice



Features:

- Newly designed Freedom IV platform available
- Designed exclusively for the rigorous standards of the Fire/EMS market
- Meets the Zone "A" upper requirements of all NFPA 1901 specifications
- Brake/tail/turn option available

Mini Lightbars

Responder® HD Series



Features:

- Universal permanent mount version easily retrofits most competitive model footprints
- Permanent bolt mount versions include 6" pigtail
- Magnet mount and magnetic/suction versions include 10" straight cord with cigar plug with LED on indicator

Responder® R1LP Series



Features:

- Super LED low profile conical CON3 mini lightbar
- Polycarbonate dome
- Available with extruded aluminum base or polycarbonate base
- Available in permanent, magnetic/suction mount models

Responder® R2LP Series



Features:

- Super LED low profile linear LIN6 mini lightbar
- Polycarbonate dome
- Available with extruded aluminum base or polycarbonate base
- Available in permanent, magnetic/suction mount models
- DUO technology model has different color LEDs

Mini Century™ Series



Features:

- Extruded aluminum base
- Standard current switching
- Scan-Lock flash patterns
- Pattern override
- Low profile

Mini Cenator™ Series



Features:

- SAE class 1 certified
- Four LIN6 lightheads
- Magnetic mount
- Permanent mount with 20' cable
- Advanced thermal design

Mini Justice® Series



Features:

- Super LED CON3 modules
- Linear super LED corners
- Permanent modules
- Low profile
- 2.25" high

Mini Freedom® IV Series



Features:

- Linear super LED technology
- Advanced thermal design
- Aluminum top repels several environmental damages
- Center dividers

Mini Liberty™ II Series



Features:

- Available in SOLO
- Advanced thermal design
- Aluminum top repels several environmental damages
- Extruded aluminum platform
- One piece UNI-DOME
- Scan-lock flash pattern switch

Mini Legacy® Series



Features:

- Aluminum top repels several environmental damages
- Advanced thermal design
- Center dividers
- Extruded aluminum platform
- One piece UNI-DOME
- Scan-lock flash pattern switch

Traffic Advisors

Traffic Advisor™ Rear Slot Mount



Features:

- Interior or exterior applications
- Extruded aluminum housing
- 15' cable standard, extra length cables available
- Fully encapsulated

Traffic Advisor™ Dominator Series - Dominator Plus



Features:

- Interior or exterior applications
- Extruded aluminum housing
- 15' cable standard, extra length cables available
- Fully encapsulated

Traffic Advisor™ Flat Mount



Features:

- TAM65, TAL65, TA4437M
- Interior or exterior applications
- Extruded aluminum housing
- Fully encapsulated

- 15' cable standard, extra length cables available
- Split arrow & warning function
- 5 year warranty

Traffic Advisor™ Front Load



Features:

- Interior or exterior applications
- Extruded aluminum housing
- Fully encapsulated
- 5 year warranty
- Split arrow & warning function
- SAE class 1

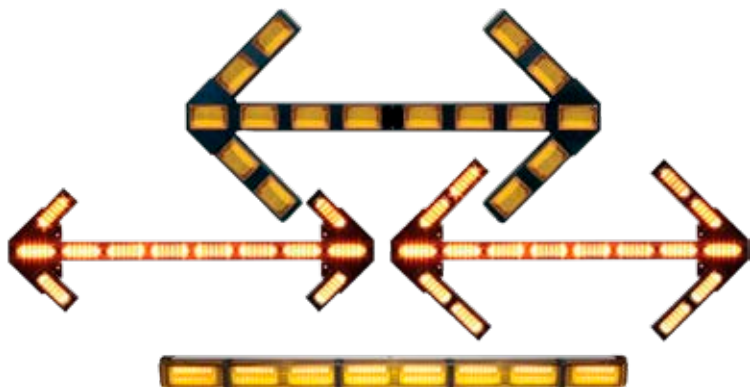
Traffic Advisor™ Dominator Series - Dominator Plus



Features:

- TAC8 includes control head
- Black extruded aluminum housing
- 15' cable standard, extra length available
- Rear drip switch provides 8 flash patterns

Traffic Advisor™ Flat Mount



Features:

- Extruded aluminum housing
- 15' cable standard, extra length available
- Left arrow, right arrow, split arrow, and warning functions
- Fully encapsulated
- 5 year warranty
- SAE class 1

Lightheads

ION™ Series*



Features:

- SOLO, DUO, & TRIO models available
- Single or split colors
- Available with smoked lenses

ION™ Mini T-Series*



Features:

- Available in 3-in-1 combination
- Single color models have combination with 180° and TIR directional warning
- Black, white, or chrome housing
- Available with smoked lenses
- Ground illumination light
- Spotlight color

Micron™ Series*



Features:

- Surface mount installation
- Fully encapsulated
- 5 year warranty
- R65 class 1
- Hard coat
- Scan-Lock technology

TIR3™, LIN3™, LINZ6™, & LINV2™ Series*



Features:

- 5 year warranty
- Black polycarbonate mounting flange
- Fully encapsulated
- Scan-Lock technology
- Hard coat
- R65 class 1

Vertex™ Series



Features:

- Self-contained light
- Available as omni-directional
- Designed to mount in composite
- Clear outer lens, color LEDs

OS™ Series



Features:

- Fully encapsulated
- 5 year warranty
- Includes chrome housing
- Clear outer lens, color LEDs

2G & 5G Series



Features:

- SmartLED design requires no external flasher
- Fully encapsulated
- Includes mounting grommet

4" Round Series



Features:

- Supplied with an adapter for PAR-36 (4.5") applications
- Fully encapsulated
- 5 year warranty
- Hard coat
- Scan-Lock technology
- SAE class - 1

Strip-Lite™ Plus Warning Light



Features:

- Symmetrical center positioned wire exit
- Includes a 12" pigtail
- Low current consumption
- 5 year warranty

400 Series



Features:

- Linear super-LED available in single or dual level warning
- Fully encapsulated
- 5 year warranty
- Available with clear or color lenses

500 Series



Features:

- 5 year warranty
- Linear super-LED available in single or dual level warning
- Available with clear or color lenses
- Fully encapsulated

600 Series



Features:

- Linear super-LED
- Rota-Bean models available
- Available with clear or color lenses
- Available in steady-burn or with internal flasher
- Surface mount and recess mount models
- 5 year warranty

Illumination

Pioneer Micro™



Features:

- MPPBCS, MPPB, & MPRW
- 8" spotlight pattern comes standard
- Includes three additional optic lenses for a light pattern
- Optic lens changes easily
- Injection molded polycarbonate lenses are impact resistant
- Solid-state electronics
- Recessed 15° angle mount with chrome flange
- Low profile pedestal mount available

Pioneer LiFe™ Series



Features:

- LF35
- Floodlight lens included
- 8" TIR spotlight lens
- 100% solid-state electronics
- Impact resistant glass
- Reinforced safety yellow nylon housing
- Adjustable ratcheting mechanism allows for a 180° range of uninterrupted light
- Up to 7 hours of runtime in battery saver mode
- 4-5 hour full charge time
- Rated for more than 2000 charging cycles
- Short circuit
- Thermal protection
- Hard coat
- 5 year warranty
- AC charging available

PAR Replacement Lamps



Features:

- Includes 6" pigtail
- Handheld units
- Includes 90lb pull magnet mount
- Available with clear or smoked lens
- 5 year warranty

PAR-36



Features:

- Floodlight spotlight models
- Black cast aluminum housing
- Super-LED with low current draw
- Stainless steel bracket
- Hardware included
- Two intensities available

Handheld Spot/Floodlights



Features:

- 90° pull magnet
- 8" coiled cord
- Cigar plug
- Built-in push button
- Hard coat
- 5 year warranty

Rubber Housing Spot/Floodlights



Features:

- Rubber stud/swivel housing
- Available with or without lighthead
- Hard-coated lenses
- 5 year warranty

Switches & Controls

Designed for durability and simplistic use, Whelen provides you with various power control centers and switches. The compact and economic PCCW Series is engineered for complete control of numerous auxiliary light functions.

Power Controls Center



Features:

- Backlit function windows
- Handheld or mounted to the dash or console
- LED "On" indicator
- 2 year warranty
- Up to 12-hour battery life

Here at Haaker Equipment Company, we promise to bring you the best from trusted brands like Whelen!





Federal Signal - Light Bars

We know your number one priority is safety, which is why we offer products from Federal Signal. Seeing and being seen requires lightbars, beacons, and more. Keep you and your team safe from dawn to dusk.

Allegiant™ Discrete



Features:

- Low power mode
- Two-color capability
- Low-profile
- Linear LED light bar

Allegiant™ Serial



Features:

- Top domes available in amber, black, blue, grey, clear, and red
- Low power mode
- Two-color capability

Legend® LPX Discrete



Features:

- Low-profile
- Linear LED light bar
- Top domes available in amber, black, blue, grey, clear, and red

Legend® LPXH Tow Discrete



Features:

- Low-profile
- Linear LED light bar
- Controlled flash pattern feature

Legend®



Features:

- Low-profile
- Top domes available in amber, black, blue, grey, clear, and red
- Linear LED light bar
- Low power mode
- 5 year warranty

Navigator® Discrete



Features:

- High-profile
- Linear LED light bar
- Cable LED light bar
- Includes Solaris LED reflector technology
- 5 year warranty

Navigator® Serial



Features:

- Linear LED light bar
- Front flood capability
- High-profile
- Includes Solaris LED reflector technology

Integrity™



Features:

- Top domes available in amber, black, blue, grey, clear, and red
- Low-profile
- Three-color capability
- Includes Solaris LED reflector technology

Valor®



Features:

- Low-profile
- Non-linear V-shaped light bar
- 5 year warranty
- Includes Solaris LED reflector technology
- Front and rear flood

Mini-Light Bars

18" and 25" Navigator®



Features:

- High-profile
- Cable LED light bar
- Solaris LED reflector technology
- Two-color capability

21" Allegiant®



Features:

- Low-profile
- Linear light bar
- Traditional and serial versions available

HighLighter™ LED Pro



Features:

- LED mini-light bar
- Low-power mode
- Low-profile

HighLighter™ LED & LED Plus



Features:

- Uniform 360° light
- Low-profile
- LED mini-light bar

24" Legend® LPX Discrete



Features:

- Low-profile
- Cable LED mini-light bar
- Selectable flash patterns
- Includes Solaris LED reflector technology
- 5 year warranty

LED Beacons

Pro LED Beacon



Features:

- High-profile and low-profile
- Single and dual color versions available
- Low-power mode

Contact us today to visit us online to view our full line of Federal Signal products!

Pulsator® LED



Features:

- High-profile and low-profile
- Selectable flash patterns
- Built-in permanent pipe mount

UltraStar® LED



Features:

- LED Beacon
- Selectable flash pattern feature

SLR Beacon



Features:

- Rotating LED beacon
- High-power
- Built-in permanent, 1" pipe mount
- Multi-voltage
- LED reflector
- 5 year warranty

AL2



Features:

- High-profile
- Single flash pattern
- Multi-voltage
- SAE class 2

LP800 LED



Features:

- Dual level beacon
- Selectable flash patterns
- Built-in 1" pipe mount

LP800 LED - Accessories



Features:

- Two-tier solaris LED reflector technology
- Base Din Mount

Model 651 & 851 LED



Features:

- High-profile and low-profile
- Multiple voltage
- Polycarbonate dome

Firebolt® LED



Features:

- Low-profile
- Multi-voltage
- Class 2 & Class 3
- 5 year warranty

Strobe Beacons

Firebolt® Plus



Features:

- Low-profile
- Rubber base resists corrosion and absorbs harsh shock
- 3 year warranty
- Replacement parts are available for order

Model 401



Features:

- Low-profile
- Polycarbonate dome and base
- Multi-voltage
- Replaceable strobe tube
- SAE class 3

Directional Lighting

Latitude™ SignalMaster



Features:

- Available in 6- or 8- head models
- Three-LEDs per light head
- Interior and exterior mounting brackets available
- Co-extrusion
- Equipped with on-board circuitry
- 5 year warranty

CN SignalMaster™



Features:

- Three-color capability
- Built-in SignalMaster
- Internal or external use
- Includes Solaris LED reflector technology
- 5 year warranty

Escape 72" SignalMaster™



Features:

- Available with amber or clear domes
- 6x4 QuadFlare
- 5 year warranty
- Includes Solaris LED reflector technology

SignalMaster™ Controls



Features:

- Multi-voltage
- One controller operated
- 8-lamp directional lights
- 14 SignalMaster patterns
- AUX IN and AUX OUT
- Turn signal override
- Tactile switch panel
- 3 year warranty

Exterior Mount/Perimeter Lights

IMPAXX®6 & IMPAXX®3



Features:

- LED perimeter light
- SpectraLux
- Multicolor LED technology
- One controller operated
- Waterproof housing
- LEDs offered in amber, blue, green, red, and white
- Fully encapsulated
- 25 flash patterns

MicroPulse® Wide Angle 9



Features:

- Utilizes 9 LEDs
- 12 flash patterns
- UV resistant polycarbonate lens
- 3 year warranty
- Available in chrome

MicroPulse® Wide Angle 6



Features:

- Utilizes 6 LEDs
- 27 flash patterns
- Black bezel included
- Optional white bezel
- Steady burn model
- 3 year warranty

MicroPulse® Ultra**Features:**

- Multiple mounting options features
- 27 selectable flash patterns available
- UV resistant polycarbonate lens

MicroPulse® Ultra Dual**Features:**

- Flash as solid or dual light head
- Multiple mounting options features
- Low-profile
- 3 year warranty

MicroPulse® C Series**Features:**

- Superior warning
- High-powered LEDs
- Single and split color models available
- Low-profile

MicroPulse® Flashing/Marker**Features:**

- Superior warning
- High-powered LEDs
- FVMSS marker light
- Warning light
- Low-profile

FireRay® 4x3**Features:**

- IPG7 rated for extra protection
- Available in single or split color
- Optional chrome bezel

FireRay® 6x4**Features:**

- IPG7 rated for extra protection
- Warning lights
- Surface mounts easily
- Low power feature

FireRay® 7x3**Features:**

- Available in single or split color
- IPG7 rated for extra protection
- Optional chrome bezel

FireRay® 9x7**Features:**

- Surface mounts easily
- Low power feature
- IPG7 rated for extra protection
- Warning lights

QuadFlare® 4x3**Features:**

- Optional chrome-plated trim bezel available
- Solaris LED reflector technology feature
- Enhanced design
- 5 year warranty

QuadFlare® 6x4**Features:**

- Includes Solaris LED reflector technology
- Unique Quad-X patterns
- Built-in flasher feature
- 5 year warranty

QuadFlare® 7x3**Features:**

- Solaris LED reflector technology feature
- Optional chrome-plated trim bezel available
- Built-in flasher feature
- 5 year warranty

QuadFlare® 9x7**Features:**

- Built-in flasher feature
- 5 year warranty
- Solaris LED reflector technology feature
- Optional chrome-plated trim bezel available

4200s



Features:

- Surface mount for 4-LED light head
- 12 selectable flash pattern
- 12VDC
- Suitable for external and internal mounting options
- Available in amber or white LEDs
- Includes black mounting bezel (optional white or black available)

SignalTech® LED Lights



Features:

- Sealed wiring harness
- Random, alternating, or synchronous flash patterns available
- 3 year warranty

Corner® LED Lights



Features:

- Built-in selectable flash patterns available
- Designed with two models of operation
- Dual color models
- 5 year warranty

Area Lighting

Wireless VisiBeam® / VisiBeam®



Features:

- High-power spotlight
- Superior work area illumination
- Ergonomic design
- Wireless transmitter
- Can connect up to 4 transmitters

You can trust us to bring you products that are designed well, and built to last multiple projects

Mobile Cameras

PBX Series Push Bumper



Features:

- Mount kit included
- Center cross plates and predrilled uprights
- Heavy duty 4 gauge steel uprights
- Wide rubber strips

Mobile Camera Systems



Features:

- High-resolution camera
- Sony CCD cameras
- TFT-LCD color monitors
- Multiple camera lengths available upon request

MB1 LED Message Board



Features:

- Public safety messaging system technology
- LED message display
- Suitable for interior or exterior mounting
- Hardware kit included

Mounting Bars



Features:

- Mounts any type of warning light
- Works with directional lights and work lights
- Accommodates mini and full light bars



Elgin Sweeper Parts

Haaker Equipment Company is recognized as an OEM factory authorized supplier of Premium Quality Elgin Sweeper parts. We supply several Elgin OEM brooms and parts from bearings to conveyor belts. Contact us today or visit us online to view our full line of products and learn more.



Main Brooms

Standard Tube Broom



Features:

- 100% virgin polypropylene
- Abrasion resistant for longer life
- Outstanding surface coverage and flicking action
- One-piece broom unit

Heavy-Duty Tube Broom



Features:

- 100% virgin polypropylene
- Best surface coverage
- More filaments per inch
- Steel tube core
- One-piece broom unit

Strip Broom



Features:

- Outstanding sweeping results
- Easily refilled core for quick change-out
- 100% virgin polypropylene
- Durable steel cores

Saver Sweep Broom



Features:

- Five tight end wraps
- One-piece unit for fast, trouble-free replacement
- 100% virgin polypropylene
- Abrasion resistant

Combination Sweep Tube Broom



Features:

- Combination of polypropylene and wire filaments
- Loosen and sweep up more compacted debris
- Abrasion resistant

Wafer Section Broom



Features:

- 100% virgin polypropylene
- Galvanized spring steel wires
- Steel spacers
- Durable one-piece cores are easily configured and refilled

Extension Brooms

Extension Broom



Features:

- One-piece unit for fast, trouble-free replacement
- 100% virgin polypropylene
- Consistent red color extrusion
- Abrasion resistant

Center Brooms

Center Broom



Features:

- 100% virgin polypropylene
- Compact size
- Easy to ship and store
- Short, dense filaments
- Lightweight

Combination Sweep Extension Broom



Features:

- 100% virgin polypropylene
- Galvanized spring steel wires
- One-piece unit for fast, trouble-free replacement
- Heavy 16 gauge tubing

Combination Center Broom



Features:

- 100% virgin polypropylene
- Galvanized spring steel wires
- Short, dense filaments
- Compact size
- Easy to ship and store

Side Brooms

Side Broom



Features:

- Heavy-Duty option available
- Superior steel wire for extended sweeping hours
- High-impact
- Non-rusting plastic segments

Polypropylene Side Broom



Features:

- Polypropylene filaments
- Spark resistant
- High-impact
- Plastic block segments
- Non-abrasive sweeping

Aggressor XR Side Broom



Features:

- Combination of cable and wire bristle for compacted debris
- One-piece design for easy removal and replacement
- Steel mounting

Aggressor XT Side Broom



Features:

- Rugged, welded construction
- One-piece design for easy removal and replacement
- Steel mounting
- Heavy-duty



Scan For More Info



Switch-N-Go Multi-Use Work Trucks

For over two decades, Switch-N-Go® has been providing solutions to businesses that want a work truck that can do more. With nearly 30 different work truck bodies and ground level loading/unloading, Switch-N-Go® offers endless opportunities to maximize investment and optimize the work day. Match your fleet to your business with interchangeable truck bodies to service almost every industry with solutions in stainless steel, specialized equipment upfits, and more.



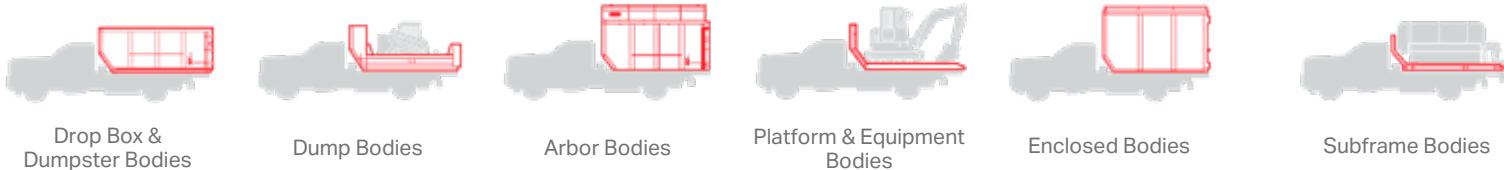
Multipurpose Made Easy

Switch-N-Go's customizable truck build is the ultimate multi-use truck. It's interchangeable designs enable peak productivity with only one piece of equipment. Switch your truck body easily to another layout and move materials, equipment, and waste with ease.

Features:

- Versatile, efficient, and adaptable
- Builds available in carbon steel, stainless steel, and aluminum
- Ground level loading and unloading
- 50° dump angle

Over 25 Interchangeable Work Truck Bodies



Drop Box & Dumpster Bodies

Dump Bodies

Arbor Bodies

Platform & Equipment Bodies

Enclosed Bodies

Subframe Bodies



Drop Box Body

Features:

- 18 yd³ hauling capacity
- Available in lengths ranging from 8-15'
- Barn door or single swing style tailgate
- Optional internal D-Rings for strapping down equipment
- Medium or heavy duty grade available
- Mini-rolloff container is designed to haul debris, materials or equipment



Dumpster Body

Features:

- 14-20 yd³ hauling capacity
- 50° dump angle
- Manufactured in 3 standard lengths (11', 12' and 14')
- 88" interior & 96" exterior body widths
- Interior side heights 51" or 53"
- Standard 6" steel ground rollers for smooth operation



Dump Body

Features:

- Carbon steel, stainless steel, or aluminum options
- 2-way tailgate features a ramp gate for drive-on convenience and a dump gate that makes dumping materials easier
- 12" side height & 24" tailgate height
- Drop down sides for curb access
- 50° dump angle



Arbor Body

Features:

- Sectional or one piece removable roof
- Single swing or barn doors
- Standard 6" steel ground rollers for smooth operation
- Optional internal D-Rings for strapping down equipment



Flatbed Body

Features:

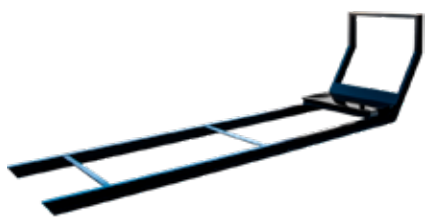
- 112 ft² of flat space with a fold down ramp in platform bodies
- Ideal for hauling equipment & materials
- Manufactured in lengths from 9'-15'
- Optional beavertail features low profile 4" steel ground rollers
- Bulkhead window for greater visibility



Storage Body

Features:

- Up to 702 ft³ of storage
- Lockable security style doors
- Available in seven standard lengths from 9'-15'
- 72" high sides plus 6" peak roof for walk-in space
- Standard 6" steel ground rollers



Subframe Body

Features:

- Ideal for specialized equipment upfits
- Easily transport a liquid tank or applicator
- Lightweight design with sloped front
- Rail slides with no wheels
- 11' or 14' lengths



Versa-Fit Bumper

Features:

- 20,000 lb trailer weight capacity
- Standard light package includes stop, turn, tail, reverse, and strobe
- OEM specific bolt on or welded design
- Interchangeable height adjustable ICC bars



Hoist System

Features:

- Designed for class 4-7 chassis cab vehicles with a GVW of 13,500-33,000 lbs and a cab-to-axle of 60-138"
- Available in electric-over-hydraulic (E-Series) or full hydraulic (H-Series)
- Single handed controls (wired or wireless)



Scan For
More Info



Service

We supply top quality workmanship in a timely and professional manner while servicing our customers with our TAP principals. Our parts and service departments are staffed with factory-trained pros who work hard every day to keep our customers' machines up and running. Check out the many services we offer!



360° & 4-Hour Inspection

- Thorough inspection to ensure all safety items are operating properly
- All units are lifted and inspected to do a thorough and complete inspection
- In-depth testing to certify the unit is running efficiently
- Haaker is an authorized dealer with factory trained & certified technicians

Service Packages

- Bronze, Silver, Gold, and Platinum packages built for your unit
- Complete underbody inspection and lubrication of all zerk fittings
- Reliable performance protects operators, crews, & surrounding property

A/C Service

Have an issue with your A/C? Let our ASE certified staff inspect your equipment's air conditioning system. Keep your operators cool and productive all day long.

Chassis Diagnostics

- Keep your equipment running without having to send your equipment to multiple service providers
- Bring your equipment to us so we can identify the best route for repair



Battery Replacement For Electric Units

Keep your refuse trucks running reliably with fast, professional battery replacement service designed for heavy-duty demands. We test, replace, and properly dispose of old batteries to minimize downtime and keep your fleet powered and ready to work.

- Full pack replacements
- Single battery replacements
- Full string replacements
- Level 3 certifications
- Extend the life of electric units
- Restores full range and consistent daily route performance
- Reduces downtime and prevents unexpected breakdowns
- Improves efficiency, safety, and overall fleet reliability

Preventative Maintenance Agreements

Let our service teams come up with a custom service plan for your equipment.

- All equipment has designated service intervals
- We have the experience to maintain your equipment based on how the unit is being operated
- Preventative maintenance agreements keep units on track
- Reduces breakdowns and costly emergency repairs
- Extends truck lifespan and component performance
- Keeps fleets compliant, safe, and running efficiently

CNG Inspections

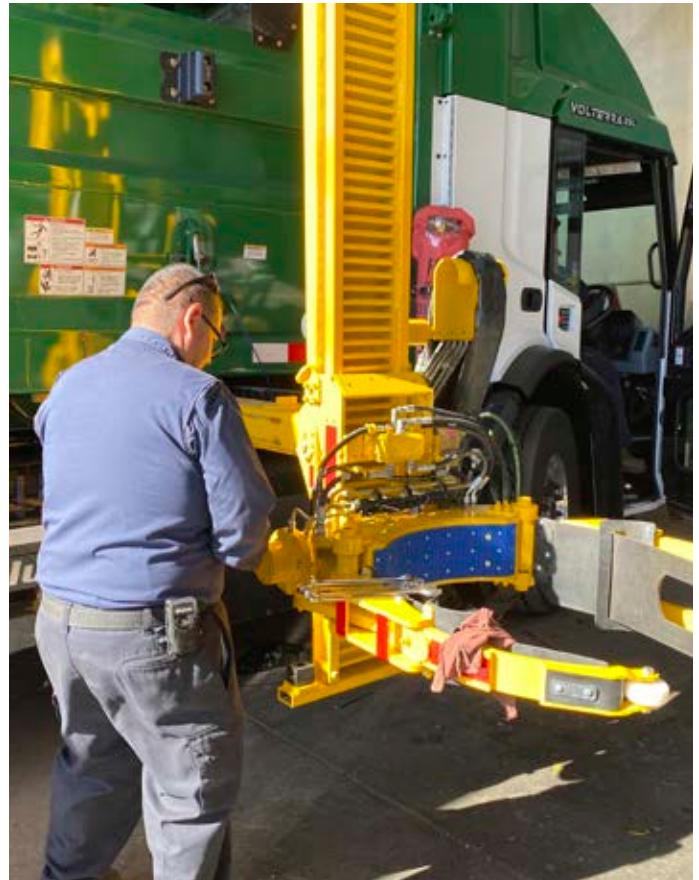
Natural Gas Vehicle Institute (NGVI) certified technicians conduct inspections and recertifications of CNG vehicle tanks and systems, including the replacement of components and systems.

- Ensure CNG systems operate safely and efficiently.
- Identify leaks, worn parts, or pressure issues early.
- Help maintain safety compliance and regulations.
- Extend the life of CNG system components.
- Reduce the risk of unexpected downtime.

Element Rebuilds

Update and refresh your equipment as a whole to extend the life of your equipment and ensuring all components meet factory standards.

- Packer rebuilds
- Body floor refurbishment
- Wear strip replacement
- Arm/carriage refurbishment
- Fabrication and modification for customized units



CARB CTC

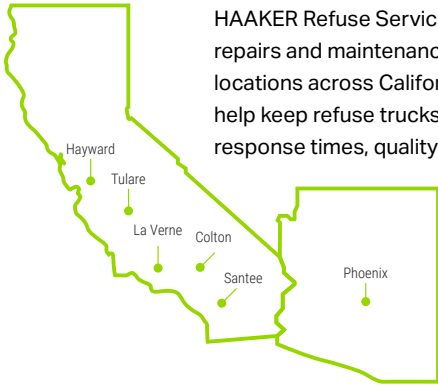
Certified technicians perform Clean Truck Checks to keep all vehicles over 14,000 GVW compliant with California Air Resources Board regulations. Regular testing helps ensure engines meet emissions standards and keeps fleets operating legally on California roads.

Custom Fabrication To Resolve Your Needs

Let our talented staff provide the solutions that you need in order to keep your equipment running at its peak performance. No idea is too big or too small! We have certified welders that can make your idea become a reality.

As an essential business to multiple municipal agencies and a business that is focused on cleaning, we stand ready to help all our customers in any way that we can from servicing, training, procuring and renting equipment.

Field and Shop Service



HAAKER Refuse Service supports your fleet with expert repairs and maintenance in the field or at our six shop locations across California and Arizona. Our technicians help keep refuse trucks running reliably with fast response times, quality parts, and dependable service.

We stand on our promise to resolve your concerns while exceeding expectations and keeping your machines running at peak performance!



Body Diagnostics

HAAKER's service team provides expert body diagnostics for refuse trucks, identifying issues in hydraulics, electrical systems, and controls before they lead to downtime. Our technicians keep your equipment running safely and efficiently while extending its service life.

- Electrical systems
- Hydraulic systems
- Pneumatic elements
- Hydraulic hose refurbishment
- Hydraulic flush
- Hydraulic filter maintenance
- Optimizes compactor and body performance
- Advanced diagnostics quickly identify faults and prevent failures
- Ensure peak mechanical performance
- Reduces risk of accidents and failures



Training

"We at Haaker Equipment are proud of our customer-first mentality through a team that is encouraged and empowered to provide excellent service. As we look forward to what the future holds our family culture ensures that we will keep our priorities of providing the best products and services. With specialists in sewer equipment, street sweeping, refuse equipment and general cleaning we can help guide our customers to make an informed and positive decision. We look forward to being your partner through each purchase for years to come." - Robin Haaker, President

Part of our commitment to you is to provide you with great service. How we do this is through our excellent and thorough training program. We offer training for our team and for our customers by providing video series and literature. Check out some of our training playlists here:

Haaker University



HAAKER
UNIVERSITY



McNeilus Refuse Truck Rentals

With HAAKER Refuse's capable rental fleet, we can help you find the equipment you need for week and month long contracts. All rental units are maintained to the highest standard to ensure your machine will be up and running when you need it most.

McNeilus Zero Radius Side Loader



Features:

An automatic side loader with an extreme reach to navigate obstacles at any distance.

- 12 ft extended reach
- 4.73 yd hopper capacity
- Lift 30- 100 gallon cans up to 550 lbs
- Load sense hydraulics to save fuel

McNeilus Heavy Duty Rear Loader



Features:

A heavy duty rear loader perfect for running long, densely populated routes.

- Increased compaction force of 7,000 lb/yd
- Fast pack cycle time
- Easy to use controls
- 16 second dump cycle with pack-on-the-go hydraulics

McNeilus Meridian Front Loader



Features:

A large capacity front loader that holds up to 14 tons while staying in federal standards.

- 13.2 yd hopper capacity
- 10,000 lb arm lift capacity
- Clear head frame to improve visibility and operator safety

Elgin Street Sweepers

Crosswind



Features:

- Highly efficient air conveyance system
- Superior air routing path and vacuum source
- High volume
- One-pass pickup

Broom Bear



Features:

- Enhanced productivity
- Maximum strength
- High torque diesel engine
- Ultimate reliability and power
- Single engine layout
- Better fuel efficiency

Broom Badger



Features:

- Compact mechanical sweeper design
- Low-profile design
- Dual-engine sweeper
- Mounted on an Isuzu NR
- Easy to operate and service

RegenX



Features:

- Single engine or dual engine
- Large-capacity hopper
- PM-10 compliant
- 50° dump angle
- Easy to operate and service
- Smooth design

Renting equipment gives you flexibility for short-term projects or unexpected needs without the cost of ownership. It keeps operations moving by providing reliable equipment when your primary units are down or demand increases.





Advance Floor Sweepers & Scrubbers

Want to impress your customers while growing your contract cleaning business? Of course, you do! The key is delivering high-quality results every time, and our floor scrubbers and other cleaning equipment from Advance help you do just that. We know that building service contractors have to deal with many challenges on the job: markets are shrinking, profits are being pushed down by price pressures and employee turnover can be particularly high. The key to gaining and keeping clients is to always deliver the highest-quality cleaning results, no matter what.



7765

Features:

- Large sweep & scrub path
- 100 GL recovery/solution tanks
- Designed for up to 600 lbs of downward brush pressure

We provide the most innovative equipment that allows you to tackle the toughest cleaning challenges with confidence.

Contact us today to learn more!

SC7010 Combination Sweeper-Scrubber



Features:

- Hybrid technology and Ecoflex™
- ClearView™ sightlines
- SmartFlow™ tilt out recovery tank
- Heated water, pressure washer

SW8000



Features:

- Heavy-duty, outdoor sweeper
- Up to 77" sweeping path
- Dust Guard™ fog system
- 60" multilevel high dump

PowerBoss Floor Scrubbers, Sweepers & Walk Behinds

Armadillo 9X/10X



Features:

- All steel construction
- Full service 180° swing-out engine
- Up to 84" sweeping path (dual side brooms)
- Dual synthetic panel filters
- Oversized curb climbing tires

Phoenix 20 Super Sport - Walk-Behind Scrubber



Features:

- Compact brush scrubber
- Traction drive
- 12 gallon solution tanks
- 13 gallon recovery tanks
- Covers 20,000 sq. ft. per hour
- Total operator comfort

Phoenix 2830 / 3030 / 3330 Walk-Behind Scrubber



Features:

- Cylindrical/Disc brushes
- Dual brush motors
- Direct brush release system

Mounted Pressure Washer Trailer



Features:

- Powder-coated steel frame
- Torflex axles
- Customize with your choice of accessories
- Integrated storage tube

Whether you are a seasoned veteran at using cleaning equipment or someone that is using it for the first time our machines are easy to operate and perform at the highest standards every time. Visit us online to view our full rental fleet.



Scan For
More Info



We are proud to offer HydroTek trailer mounted pressure washers to our great customers. Designed for optimal performance in even the toughest environments, these durable machines tackle tough jobs with ease.

Hot Water Pressure Washers

SS Series



Features:

- Rugged "Pro-TECT-it" frame
- Stainless steel panels
- Simple to use controls
- Industrial engines

HD Series



Features:

- Adjustable temperature
- Safety relief valve
- Heavy-duty industrial motor
- Downstream chemical injection

SM Series



Features:

- Portable and compact
- Up to 4 gpm at 4000 psi
- Electric start 14 hp Kohler engine
- Lifetime coil warranty

HN Series



Features:

- Cold and hot water stationary skid
- Up to 4 gpm at 3500 psi
- Natural gas, propane, or diesel
- Stainless steel housing frame

Cold Water Pressure Washers

CPS Series



Features:

- Panel mounted unloader
- Belt drive pump
- Includes nozzles with insulated quick couplers

CPX Series



Features:

- High output engines
- Steel control panel
- Remote fuel tank
- Belt guard

Accessories

Hydro Twister



Features:

- Convertible undercarriage surface cleaner
- Use with hot or cold water
- Rust resistant
- Additional nozzle sizes available

Hose Reels



Features:

- Can be mounted anywhere
- 180° swivel
- Shipped fully assembled
- Designed with a lock pin
- Made in the USA

Surface Cleaner



Features:

- High cleaning speed
- Works with hot and cold water
- Effectively removes grease
- Gets the job done quickly



Trailer & Tank Skids

ProTowWash® Portable Commercial Trailer



Features:

- Powder-coated steel frame
- High capacity water filter
- Water-tight seal
- Torsion axles

HydroTek Tank Skid



Features:

- Easy 4-bolt installation
- Securely attach to any vehicle
- Compact design
- "BOLT & Go" convenience

Alkota 20171 Trailer



Features:

- Cold and hot water skid
- Up to 5 gpm at 3500 psi
- 18 hp Kohler engine
- 200 gallon water tank
- Single axle trailer

Alkota 20151 Trailer



Features:

- Single axle
- 230 gallon water capacity
- Electric brakes
- Auto fill water
- High pressure hose reel with 100 ft. of hose

Water Recycle Systems

Portable Recycle Systems



Features:

- Automatic pump-out
- Stainless vacuum scupper
- Vacuum recovery, 12 GPM
- Oil-absorbing shock

Stationary Recycle Systems



Features:

- Replaceable cartridge filter
- Rust-proof stainless steel frame
- Automatic back flush
- Multi-media filter
- 270 gallon cleaned-water tank



Scan For
More Info



Walk Behind Floor Sweepers

Here at Total Clean, we are committed to maintaining the health and safety of all workers. Part of that commitment is offering effective silica dust exposure control plans that are customized to meet the needs of every organization. With a 99.9% filtration efficiency, our equipment by PowerBoss holds our safety measures to the highest standard.



Advance SW900

Features:

- For indoor and outdoor use
- Large main broom with dual side brooms to enhance productivity
- Ideal for cleaning contractors, industry and manufacturing, schools, hotels, warehouses, and exhibitions



PowerBoss Collector 34

Features:

- High sweeping performance
- 100% hopper capacity
- Powerful dust filter
- Heavy-duty steel frame
- Parking brake with automatic release



Advance Terra 28

Features:

- 28' wide sweep paths
- Side broom eliminates the need for edge cleaning after sweeping
- Compact and easy to maneuver
- Sweeps quietly
- Greater productivity

Ride-On Floor Sweepers

If you are looking to remove debris from large areas, we have a product for you! Total Clean is the leading sweeper distributor for street sweepers, parking lot sweepers, truck sweepers, road sweepers, and industrial sweepers. We are proud to be one of the leading Nilfisk-Advance, PowerBoss, NiteHawk, and Elgin sweeper dealers in the country that services California, Arizona, and Nevada by offering a vast range of sweeper sales, parts, and services.

Advance SW8000



Features:

- Heavy-duty, outdoor sweeper
- Up to 77" sweeping path
- Dust Guard™ fog system
- 60" multilevel high dump

Robotic Floor Care



Features:

- Autonomous scrubber
- Consistent cleaning
- Auto fill-in feature
- Service and training included

PowerBoss Armadillo 9X/10X



Features:

- All steel construction
- Full service 180° swing-out engine
- Up to 84" sweeping path (dual side brooms)
- Dual synthetic panel filters
- Oversized curb climbing tires

PowerBoss Atlas



Features:

- 64" sweep path
- 60" multilevel high dump
- Safety vision dump window
- Power control dust collection system
- Heavy-duty design

Outdoor Vacuum Sweepers

Our outdoor vacuum sweepers by Madvac and Glutton are the perfect solution for cleaning public spaces. Whether you are looking for compact models ideal for tight urban spaces or 100% electric litter vacs, we've got you covered.



eSwingo 200

Features:

- Battery capacities up to 75 kWh
- Water reclamation system
- 2- or 3-brush system options
- 78" sweeping path
- 2.6 yd³ and 102° tilting hopper



eCleango 550

Features:

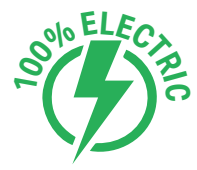
- Battery capacities up to 153 kWh
- 100% electric powered
- 2- or 3-brush system options
- 64° wide steering angle
- 6.8 yd³ and 51° tilting hopper



Glutton Collect

Features:

- 100% Electric with up to 16 hours of run time
- Compact, maneuverable and self-propelled to climb steep slopes & uneven terrain
- 24 M2 Glutton dust filter
- High suction power and variable speed



Walk-Behind Floor Scrubbers

We provide the leading floor scrubbing machines that help you clean more efficiently. Our machines redefine maneuverability with their innovative designs and powerful scrubbing in just one pass.



Advance 750 & 800

Features:

- Low-maintenance
- High productivity
- Continuous scrubbing
- Reduces dump/refill cycles
- Burst power feature
- Minimize water usage



Advance SC900

Features:

- Core task focused
- Removes common complexity routinely associated with floor cleaning equipment
- Lower overall cleaning cost
- Easy to operate and service



PowerBoss Phoenix 24

Features:

- Cylindrical brush deck
- Integrated scrubbing function
- Corrosion-resistant aluminum coating
- Flow-optimized dirty water tank
- Easy, ergonomic operation



PowerBoss Phoenix 26

Features:

- Compact disc brush scrubber
- 26" cleaning path
- Easy-to-use controls
- Low brush deck design
- Cost-effective solution



PowerBoss Phoenix 30

Features:

- Two powerful brush motors
- 20% water and chemical savings
- Easy-to-understand
- Designed to give the operator more room for their feet while operating

Ride-On Floor Scrubbers

Floor scrubbers in their simplest forms are devices for cleaning floors. These can be basic implements like floor brushes, mops, and ride-on and walk-behind machines. These machines are generally used to clean up bigger floor spaces with their water injection systems that flush cleaning solutions and water on to the floor.



PowerBoss Nautilus HD

Features:

- Hot water option available
- Easy access debris tray
- Adjustable squeegee feature
- Edge scrubbing
- Stainless steel scrub deck



PowerBoss Admiral 30"

Features:

- Compact, maneuverable, & ergonomic
- Guided wheels
- Sealed drive motor
- 30" cleaning path
- Easy access



Scrubmaster B120/B175/B260

Features:

- No tools - Brush/Squeegee change
- Stainless steel components
- Onboard diagnostics
- One-touch all function buttons



Advance SC6000

Features:

- SmartFlow™ technology
- No tools - Brush/Squeegee change
- SmartKey™ system



Advance SC6500

Features:

- Effortless control and efficiency
- Sustainable scrubbing



Advance Adgressor

Features:

- Ease of operation
- SmartFlow™ technology
- SmartKey™ & supervisor key settings
- Maximum operator safety

Ride-On Sweeper-Scrubbers

Want to impress your customers while growing your contract cleaning business? The key is delivering high-quality results every time. Our Advance floor scrubbers and cleaning equipment will help you do just that.



Powerboss B400 RH

Features:

- 100% electric with up to 7 hours of run time
- 48" scrubbing path and 65" sweeping path with dual side brooms
- 106 gallon solution and recovery tanks



Advance SC7010

Features:

- Hybrid technology and Ecoflex™
- ClearView™ sight lines
- SmartFlow™ tilt out recovery tank
- Heated water, pressure washer



Advance 7765

Features:

- Large sweep & scrub path
- 100 GL recovery/solution tanks
- Designed for up to 600 lbs of downward brush pressure

Parking Lot Sweepers

The NiteHawk parking lot sweepers are designed to increase performance and productivity. At a full stroke, the design of the hydraulic-powered pump makes our NiteHawk trucks perfect for tough sweeping jobs.



NiteHawk Osprey II

Features:

- GMC / Ford chassis
- Stainless steel hopper
- Oversize access doors
- Rear storage toolboxes
- High flow fan
- Maximum capacity in a low profile sweeper



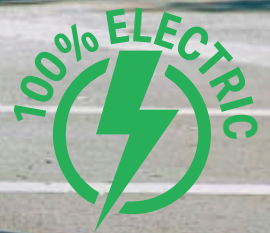
NiteHawk Raptor II

Features:

- Advanced hydraulics
- "Stealth Sweeping" system
- 5-year warranty
- Lowest cost of operation
- Stainless steel hopper
- High visibility and innovative controls



Scan For More Info



Columbia Utility Vehicles

For decades, Columbia has been equipping municipalities with versatile, efficient, and safe utility vehicles. We work closely to understand your budget, needs, and specifications to configure solutions that save you money and help you move people and cargo safely. Contact us today or visit us online to learn more about our Columbia Utility Vehicles.



The Chariot ⚡

Features:

- Move 1 operator
- Rated capacity up to 400 lbs
- Up to a 25-mile range
- Max forward speed up to 9 miles per hour



The Expediter ⚡

Features:

- Move up to 2 passengers
- Tow capacity up to 1,000 lbs
- Up to a 25-mile range
- Narrow design



Stockchaser ⚡

Features:

- Move 1 operator
- Tow capacity up to 6,000 lbs
- Max forward speed up to 8.5 miles per hour



Journeyman ⚡

Features:

- Move up to 6 passengers
- Rated capacity up to 1,100 lbs
- Up to a 40-mile range
- Max forward speed up to 25 miles per hour



Utilitruck ⚡

Features:

- Move up to 4 passengers
- Tow capacity up to 1,500 lbs
- Tailored to fit various virtually any vehicle application



Payloader ⚡

Features:

- Move up to 4 passengers
- Rated capacity up to 4,000 lbs
- Up to a 30-mile range
- Tow capacity up to 18,000 lbs
- Exceptional maneuverability

Custom Platform

The Custom Platform's innovative design offers various drive axle and battery pack configurations for optimal balance in payload carrying capacity, maximum range, and top turning performance. For an added feature, an optional Speed Rail Attach System allows for hundreds of platform uplifts.





Scan For More Info



100% Electric Powered Equipment

As alternative fuel equipment options are brought to market, HAAKER has built our electric fleet options to provide our customers with industry breaking technologies. Whether customers are impacted by state regulations or want to transition to more cost effective fuel options, we are prepared to help our customers find the best equipment options for their fleet.



Volterra Side Loader

Features:

- Payload capacities up to 13 tons
- 499 or 665 kwh battery capacity
- 550lb rated lift capacity; 30-to-110-gallon containers
- Completes a full day's route on a single charge
- 360° camera system
- Collision radar system
- Zero-radius based body



Volterra Front Loader

Features:

- Payload capacities up to 12 tons
- 499 or 665 kwh battery capacity
- 112 miles and 112 lifts
- Completes a full day's route on a single charge
- 360° camera system viewable from cab central display
- Collision radar system
- Meridian based body



EPTO Rear Loader

Features:

- Capable of collecting up to 1,200 homes and running 80 miles on a single charge
- Customize pack cycle frequency
- No auxiliary battery required
- Compatibility with electric Mack LR or Pete 520
- Simple maintenance with fewer service points



All Electric



Zero Emissions



Battery Powered



eSwingo 200

Features:

- Battery capacities up to 75 kWh
- 2- or 3-brush system options
- 78" sweeping path
- 2.6 yd³ and 102° tilting hopper



eCleango 550

Features:

- Battery capacities up to 153 kWh
- 2- or 3-brush system options
- 64° wide steering angle
- 6.8 yd³ and 51° tilting hopper



Glutton Collect

Features:

- Up to 16 hours of run time
- Compact, maneuverable and self-propelled to climb steep terrain
- 24 M2 Glutton dust filter



Scrubmaster B400RH

Features:

- 45" scrubbing path & 60" sweeping path with dust control
- 105 gallon solution/recovery tanks
- 8+ hour runtime on a single charge
- 5.3 ft³ dry sweeping hopper



Sweepmaster 1500

Features:

- 50–64" sweeping path
- 60" high dump hopper with max fill overthrow design
- 8.8 ft³ hopper



Nautilus E

Features:

- 55" scrubbing path with optional side brooms
- 90 gallon solution/recovery tanks
- 8+ hour runtime on a single charge



Liberty SC50 Autonomous

Features:

- Copycat, fill in, and manual modes
- Consistent 98-99.5% coverage
- 20" scrub path
- 15 gallon solution & recovery tanks



Columbia Utility Vehicles

Features:

- Move, carry or tow with power
- Carrying capacities up to 4,000 lbs
- Up to 6 passengers
- Battery operated up to 130 mile range

Coming Soon!



Nitehawk Raptor Electric



Stetco Bucket Truck

Live in California?
Find our CARB
regulation
resources here.



[Haaker.com/
CARB](http://Haaker.com/CARB)



**“Nobody works harder for
you than HAAKER.”**

We deliver the highest quality products and services through a team empowered to meet and exceed customer expectations.

- Team Haaker



HAAKER
REFUSE

SAN DIEGO

9465 Mission Park Pl.
Santee, CA 92071
(619) 569-1946

CENTRAL VALLEY

4490 South K St.
Tulare, CA 93274
(559) 220-8897

NORTHERN CALIFORNIA

3624 Munster Ave. Unit A
Hayward, CA 94545
(510) 514-0043

INLAND EMPIRE

401 N. Pepper Ave.
Colton, CA 92324
(909) 370-2100

LOS ANGELES

2070 N. White Ave.
La Verne, CA 91750
(909) 598-2706

ARIZONA

2940 West Virginia Ave.
Phoenix, AZ 85009
(602) 266-8214



(800) 200-3432
www.haakerrefuse.com